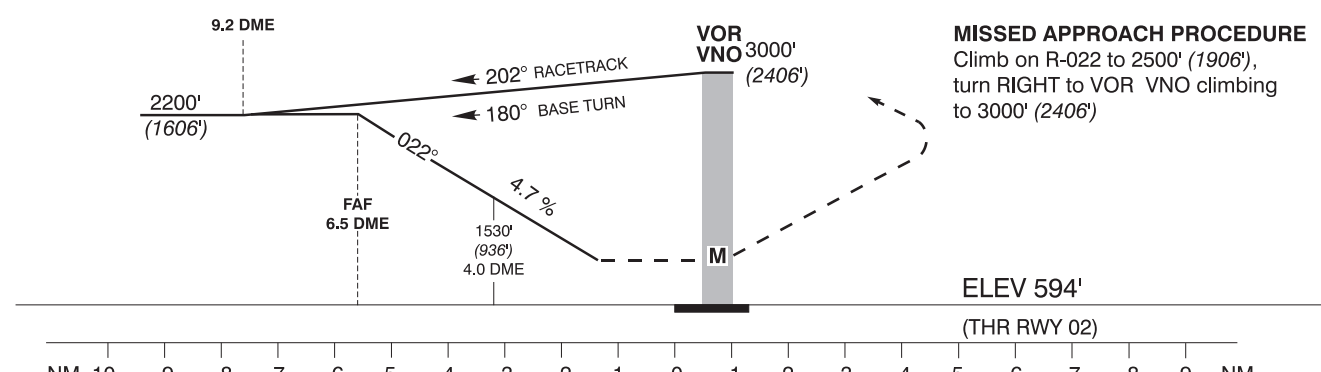
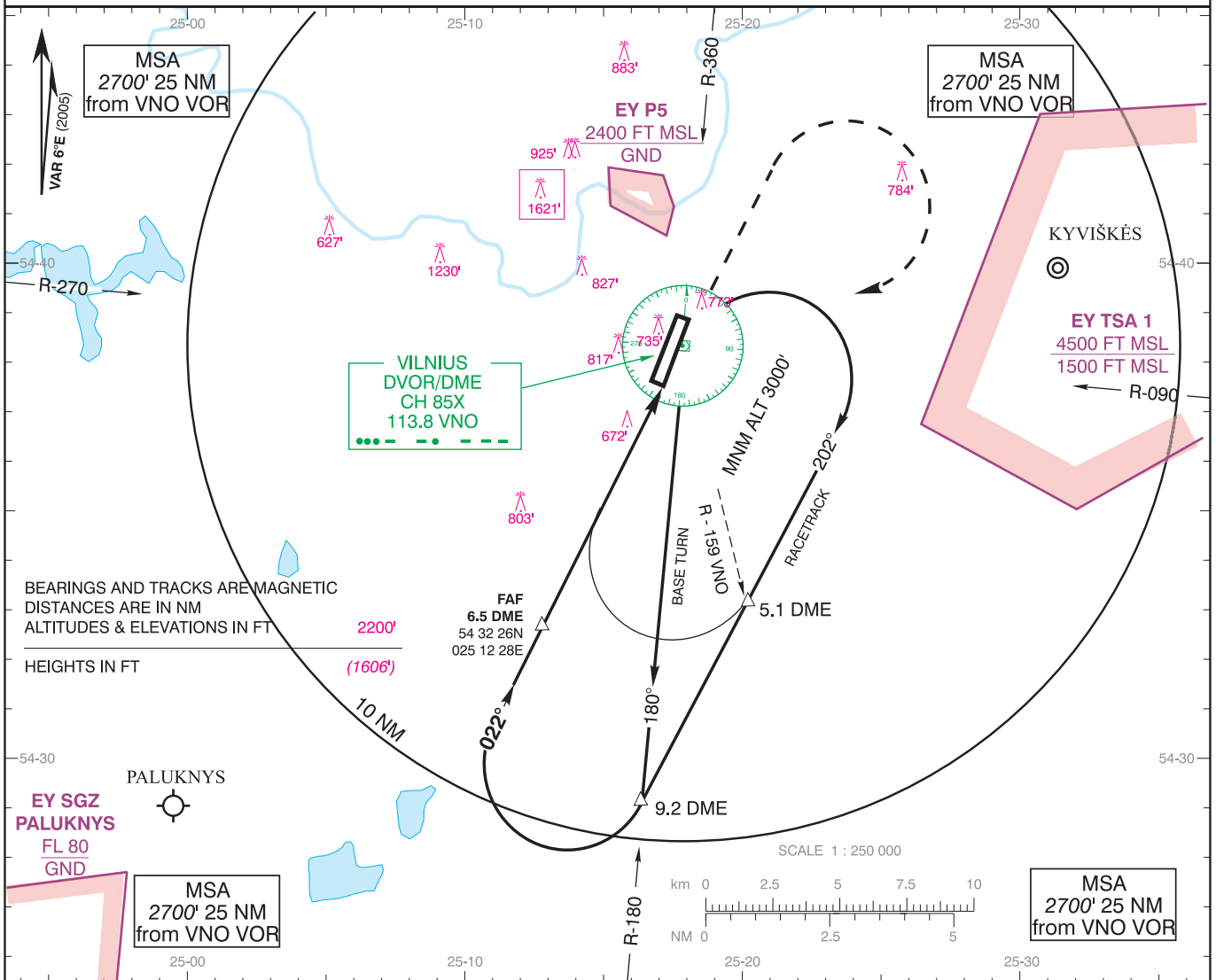


**INSTRUMENT APPROACH
CHART - ICAO**
TRANSITION LEVEL By ATC
TRANSITION ALTITUDE 5000' (4406')

AD ELEV 646'
HEIGHTS RELATED TO
THR RWY 02 ELEV 594'

APPROACH	120.700
TOWER	118.200
ATIS	125.800

**VILNIUS / International
LITHUANIA
VOR DME RWY 02**



Aircraft Category		A	B	C	D	DISTANCE	5 DME	4 DME	3 DME	2 DME			
JAR-OPS	VOR DME	1020' (426') R900 m	1020' (426') R1000 m	1020' (426') R1000 m	1030' (436') R1400 m	Altitude	1810'	1530'	1250'	960'			
	ALS out	R1500 m	R1500 m	R1800 m	R2000 m	Height	(1216')	(936')	(656')	(366')			
	STRAIGHT -IN RWY	GS					Kts	80	100	120	140	160	180
		FAF - MAPt (6.5NM)					min:sec	4:53	3:54	3:15	2:47	2:26	2:10
Rate of descent (4.7%)						ft/min	380	470	565	655	755	845	
CIRCLING-TO-LAND	100 KT	135 KT	180 KT	205 KT	Remarks: 1. MAPt at VOR 2. Circling NW of RWY in sector 270° to 360° not authorized.								
		1310' (664') V1500m	1310' (664') V1600m	2020' (1374') V2400m	2020' (1374') V3600m								

Changes: SGZ Paluknys and TSA 1 added; Magnetic variation.