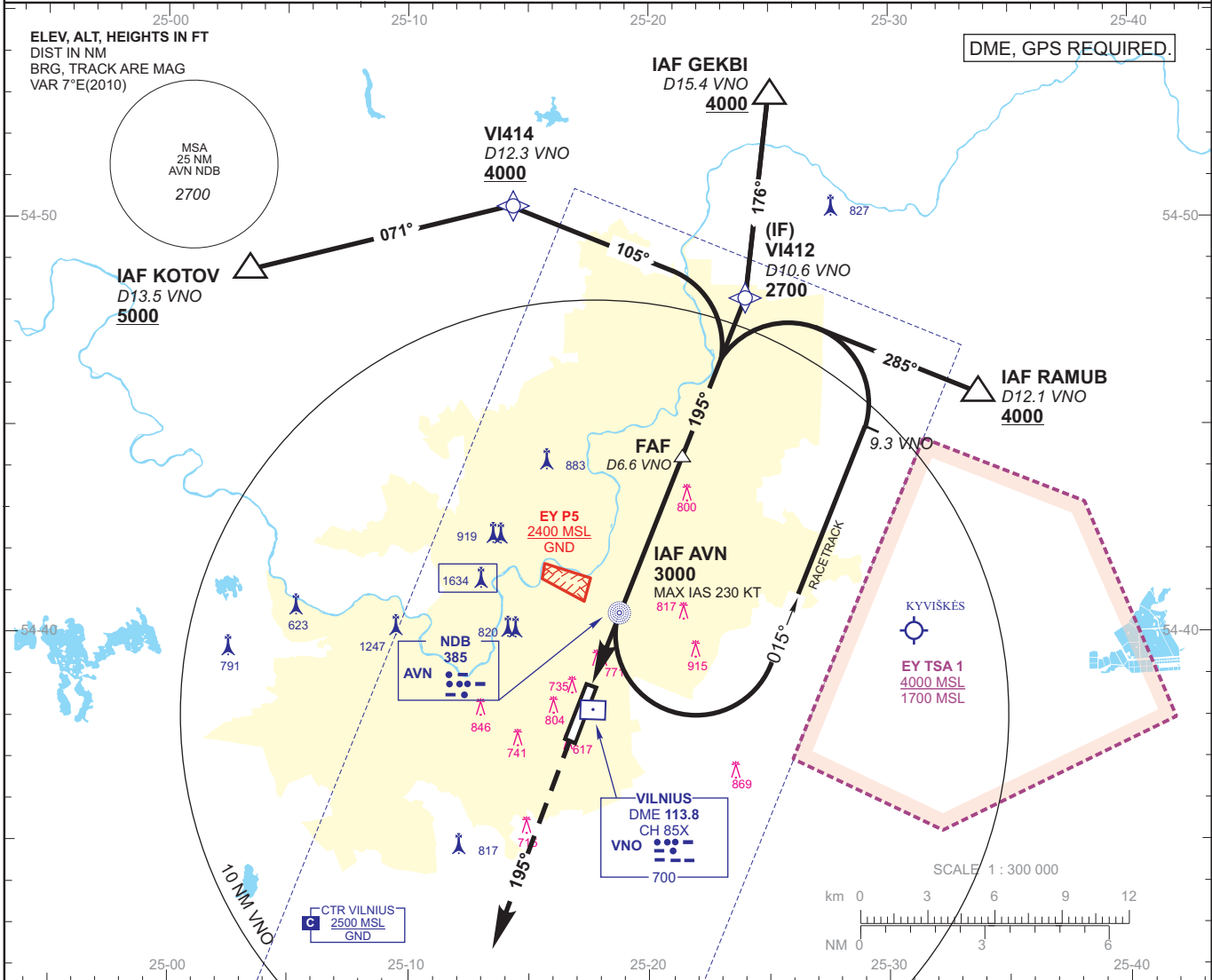


INSTRUMENT APPROACH
CHART - ICAO

AERODROME ELEV 646
HEIGHTS RELATED TO
THR RWY 20 - ELEV 646

APPROACH 120.700
TOWER 118.200
ATIS 125.800

**VILNIUS / INTL
LITHUANIA
NDB RWY 20**

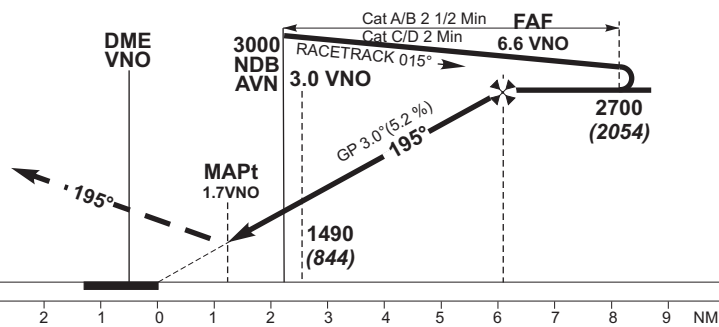


MISSED APPROACH PROCEDURE

Climb on track 195° to 3000, radar vectoring will be provided

In case of RCF climb on track 195° to reach 2700 at 9 NM VNO, then turn right to AVN climb to 4000.

THR ELEV 646
NM to/from THR RWY 20



TRANSITION ALT 5000

FIX/POINTS COORDINATES

FAF	54 44 20.5N	025 21 31.1E	BRG 015.3°
IAF AVN	54 40 53.7N	025 19 07.3E	
VI412 IF	54 48 02.7N	025 24 06.2E	VNO 54 38 09.8N 025 17 37.1E
VI414	54 50 15.9N	025 14 28.1E	THR 20 54 38 40.73N 025 17 34.99E
GEKBI	54 53 01.4N	025 24 24.6E	
KOTOV	54 48 48.5N	025 03 25.3E	
RAMUB	54 45 48.8N	025 33 43.2E	

DIST DME VNO	6	5	4	3	2
Altitude	2450	2130	1810	1490	1170
Height	(1804)	(1484)	(1164)	(844)	(524)

GS	Kts	80	100	120	140	160	180
FAF - MAPt (4.9 NM)	min:sec	3:41	2:56	2:27	2:06	1:50	1:38
Rate of descent (5.2%)	ft/min	415	520	625	730	835	940

OCA(H)	A	B	C	D
STRAIGHT-IN APPROACH	NDB	1080 (434)		
	NDB/DME			

Remarks:
1. Timing not authorized for defining the MAPt.
2. In case of NDB APP only-proceed to IAF AVN, execute IAC.

Changes: VAR and date of VAR; MAG direction; lateral limits of EY P5; circling withdrawn; page number.