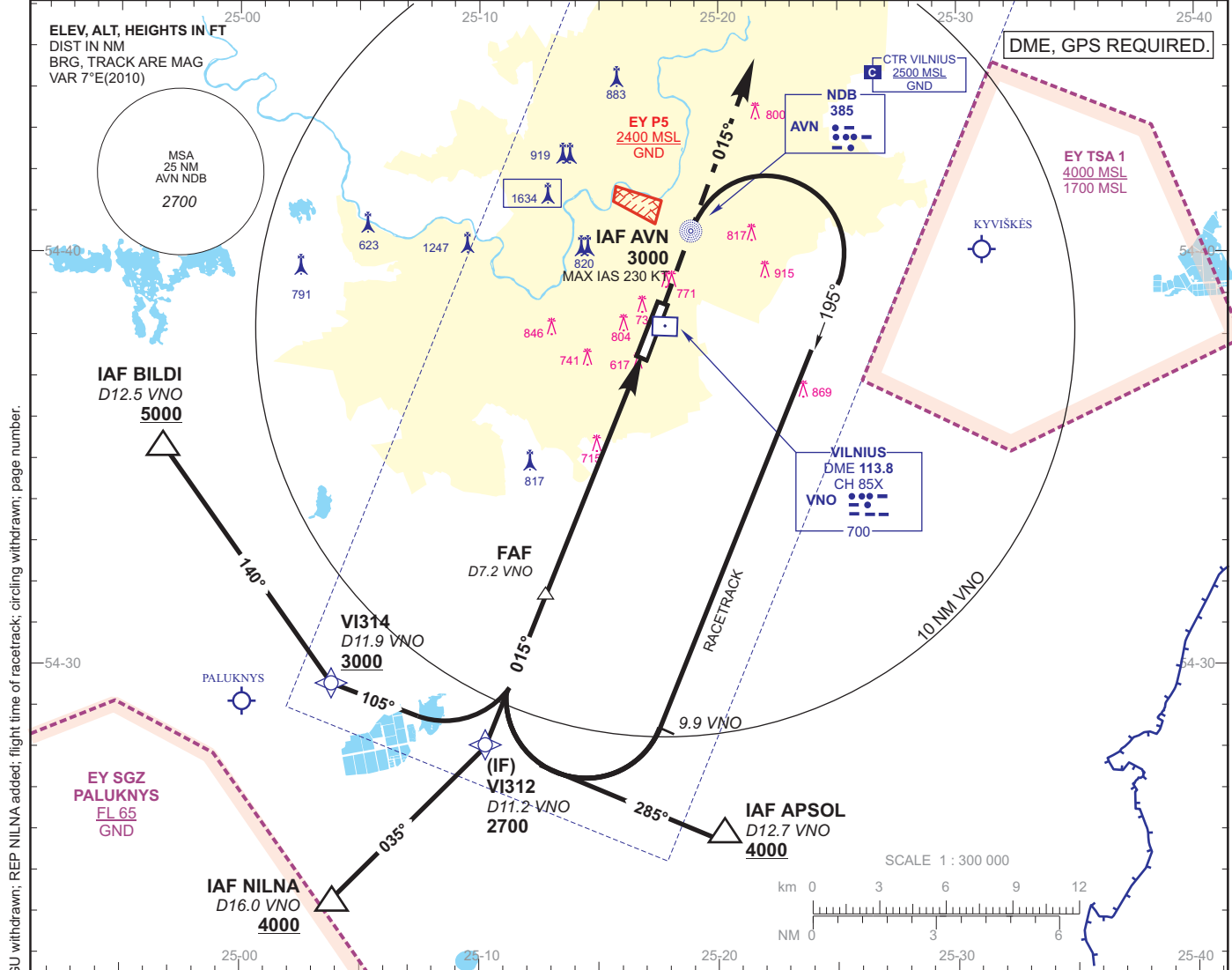


INSTRUMENT APPROACH
CHART - ICAO

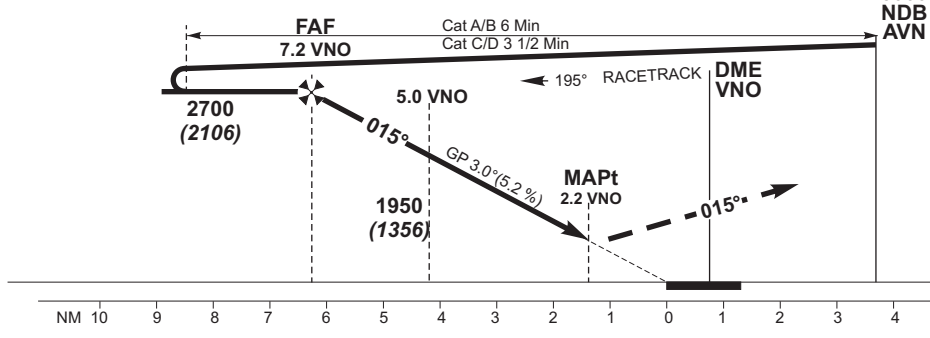
AERODROME ELEV 646
HEIGHTS RELATED TO
THR RWY 02 - ELEV 594

APPROACH 120.700
TOWER 118.200
ATIS 125.800

**VILNIUS / INTL
LITHUANIA
NDB RWY 02**



TRANSITION ALT 5000



MISSED APPROACH PROCEDURE

Climb on track 015° via AVN to 3000, radar vectoring will be provided

In case of RCF climb via AVN on track 015° to reach 2700 at 9 NM VNO, then turn left to AVN climb to 4000.

THR ELEV 594
NM to/from THR RWY 02

FIX/POINTS COORDINATES	
FAF	54 31 33.8N 025 12 39.9E BRG 195.3°
IAF AVN	54 40 53.8N 025 19 07.3E
VI312 IF	54 27 49.6N 025 10 06.8E
VI314	54 29 18.9N 025 03 45.0E
APSOL	54 25 35.0N 025 19 38.7E
BILDI	54 35 16.4N 024 56 43.1E
NILNA	54 24 06.2N 025 04 24.6E

DIST DME VNO	7	6	5	4	3	2
Altitude	2590	2270	1950	1630	1310	990
Height	(1996)	(1676)	(1356)	(1036)	(716)	(396)

GS	Kts	80	100	120	140	160	180
FAF - MAPt (5.0 NM)	min:sec	3:45	3:00	2:30	2:09	1:53	1:40
Rate of descent (5.2%)	ft/min	415	520	625	730	835	940

OCA(H)	A	B	C	D
STRAIGHT-IN APPROACH	NDB	1070 (476)		
	NDB/DME			

Remarks:
1. Timing not authorized for defining the MAPt.
2. In case of NDB APP only-proceed to IAF AVN, execute IAC.

Changes: VAR and date of VAR; MAG direction; lateral limits of EY SGZ Paluknys and EY P5; REP OLEGU withdrawn; REP NILNA added; lateral limits of EY SGZ Paluknys and EY P5; REP OLEGU withdrawn; REP NILNA added; flight time of racetrack; circling withdrawn; page number.