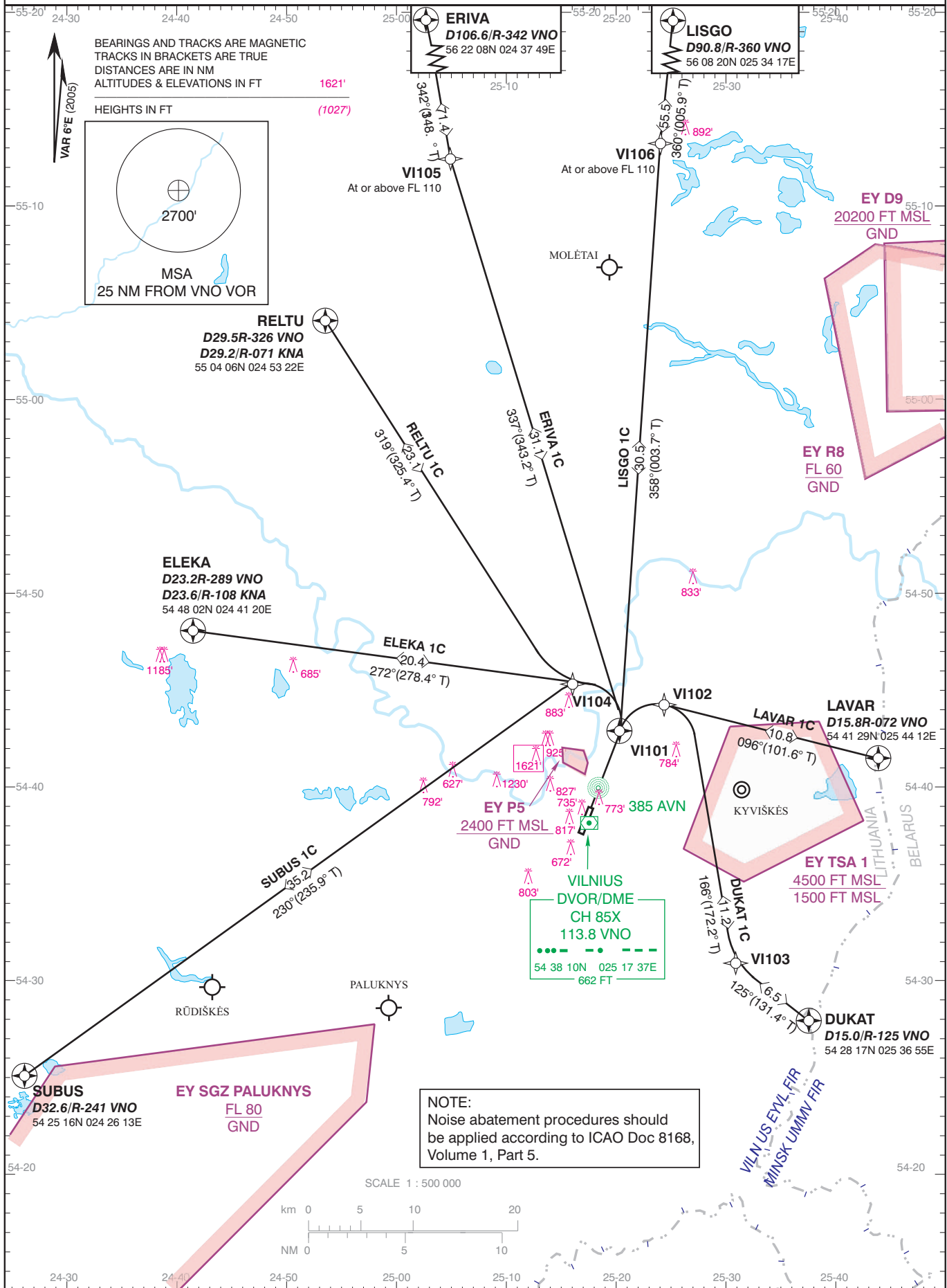


GPS/FMS P-RNAV DEPARTURE
CHART
TRANSITION LEVEL By ATC
TRANSITION ALTITUDE 5000' (4406')

AD ELEV 646'
HEIGHTS RELATED TO
THR RWY 02 ELEV 594'

ATIS	125.800
TOWER	118.200
APPROACH	120.700

VILNIUS / International
LITHUANIA
RWY 02



GPS/FMS P-RNAV DEPARTURE ROUTES RWY 02

After take-off climb to 4000' except when indicated by ATC otherwise

SID	ROUTING	ALTITUDE
DUKAT 1C	<u>VI101</u> - VI102 - VI103 - <u>DUKAT</u>	VI101 at or above 2700' (2106')
ELEKA 1C	<u>VI101</u> - VI104 - <u>ELEKA</u>	VI101 at or above 2700' (2106')
ERIVA 1C	<u>VI101</u> - VI105 - <u>ERIVA</u>	VI101 at or above 2700' (2106') VI105 at or above FL110
LAVAR 1C	<u>VI101</u> - VI102 - <u>LAVAR</u>	VI101 at or above 2700' (2106')
LISGO 1C	<u>VI101</u> - VI106 - <u>LISGO</u>	VI101 at or above 2700' (2106') VI106 at or above FL110
RELTU 1C	<u>VI101</u> - VI104 - <u>RELTU</u>	VI101 at or above 2700' (2106')
SUBUS 1C	<u>VI101</u> - VI104 - <u>SUBUS</u>	VI101 at or above 2700' (2106')

Way-point list

Way-point	Coordinates
DUKAT	54 28 17.27N 025 36 55.19E
ELEKA	54 48 01.61N 024 41 20.10E
ERIVA	56 22 07.64N 024 37 48.68E
LAVAR	54 41 29.45N 025 44 12.47E
LISGO	56 08 20.00N 025 34 17.00E
RELTU	55 04 05.54N 024 53 21.84E
SUBUS	54 25 16.23N 024 26 13.31E

Way-point	Coordinates
VI101	54 42 51.41N 025 20 29.14E
VI102	54 43 40.02N 025 25 56.24E
VI103	54 32 34.84N 025 28 33.60E
VI104	54 45 07.65N 025 16 07.57E
VI105	55 12 31.31N 025 04 50.96E
VI106	55 13 14.52N 025 23 56.56E