

RNAV (GNSS, VOR/DME) OVERLAY  
STANDARD DEPARTURE CHART  
INSTRUMENT (SID) - ICAO

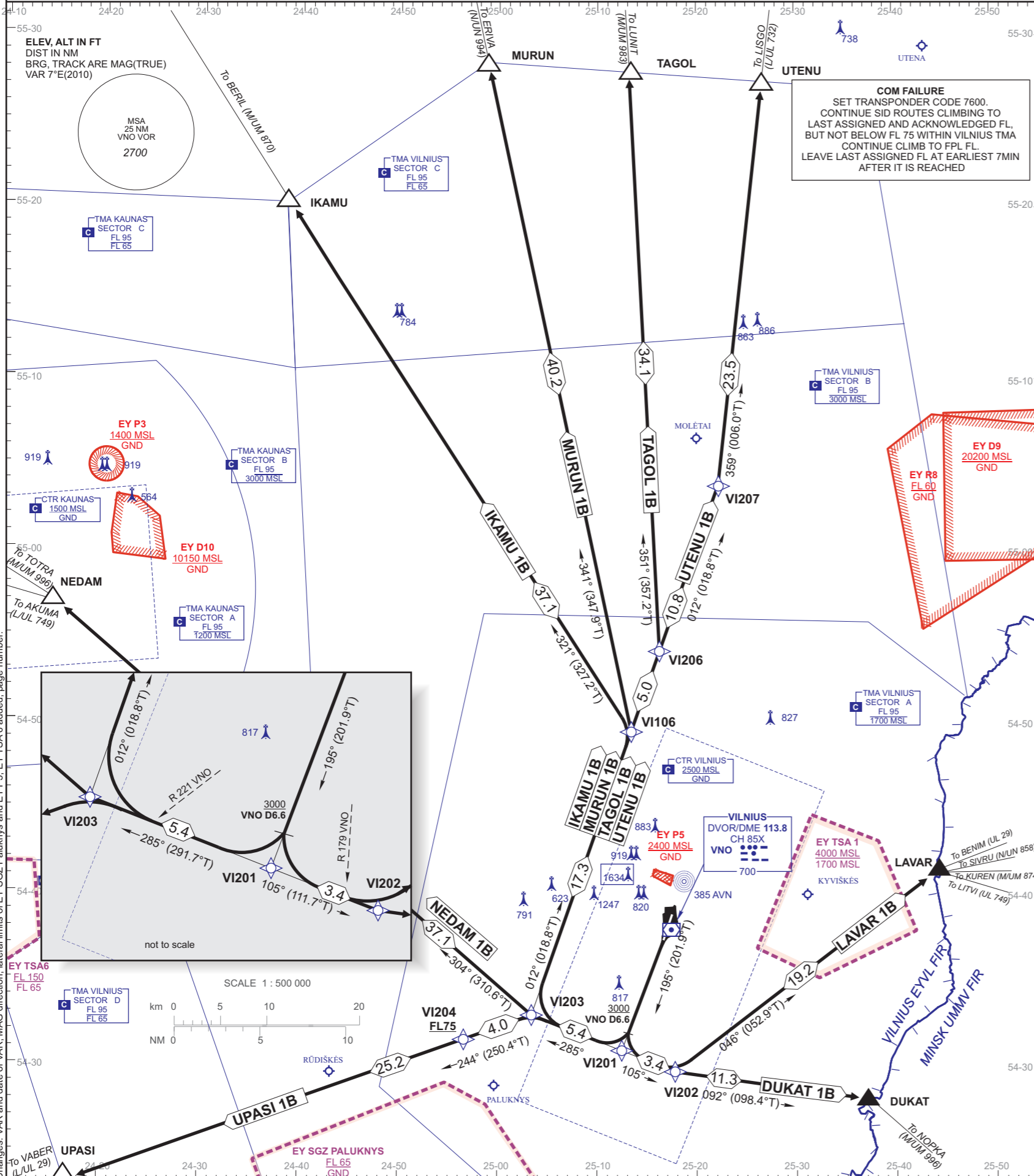
TRANSITION ALTITUDE 5000

AERODROME ELEV 646  
HEIGHTS RELATED TO  
THR RWY 20-ELEV 646

ATIS 125.800  
TOWER 118.200  
APPROACH 120.700

DUKAT 1B, IKAMU 1B, LAVAR 1B,  
MURUN 1B, NEDAM 1B, TAGOL 1B,  
UPASI 1B, UTENU 1B

VILNIUS / INTL  
LITHUANIA  
RNAV SID RWY 20



STANDARD INSTRUMENT DEPARTURE (SID) ROUTES RWY 20

SID NAME	ROUTE
DUKAT 1B	On RWY track to VNO 6.6 NM (at 3000 FT MSL or above), then turn left to track 092° and proceed to DUKAT.
IKAMU 1B	On RWY track to VNO 6.6 NM (at 3000 FT MSL or above), then turn right to track 285°. Cross R-221 VNO, turn right to track 012°. At VNO DME 11.7 NM turn left to track 321° and proceed to IKAMU.
LAVAR 1B	On RWY track to VNO 6.6 NM (at 3000 FT MSL or above), then turn left to track 105°. Cross R-179 VNO, turn left to track 046° and proceed to LAVAR.
MURUN 1B	On RWY track to VNO 6.6 NM (at 3000 FT MSL or above), then turn right to track 285°. Cross R-221 VNO, turn right to track 012°. Intercept R-341 VNO and proceed to MURUN.
NEDAM 1B	On RWY track to VNO 6.6 NM (at 3000 FT MSL or above), then turn right to track 285°. Cross R-232 VNO, turn right to track 304° and proceed to NEDAM.
TAGOL 1B	On RWY track to VNO 6.6 NM (at 3000 FT MSL or above), then turn right to track 285°. Cross R-221 VNO, turn right to track 012°. Intercept R-351 VNO and proceed to TAGOL.
UPASI 1B*	On RWY track to VNO 6.6 NM (at 3000 FT MSL or above), then turn right to track 285°. At VNO DME 9.5 NM turn left to track 244° and proceed to UPASI.
UTENU 1B	On RWY track to VNO 6.6 NM (at 3000 FT MSL or above), then turn right to track 285°. Cross R-221 VNO, turn right to track 012°. Intercept R-359 VNO and proceed to UTENU.

Remark:

AFTER TAKE-OFF:

- climb to 4000 FT MSL. Unless otherwise specified by ATC ;
- At 2500 FT MSL contact with Vilnius APP FREQ 120.700 MHz

RNAV SID RWY 20 WAY POINT CODING

(All segments from VI201 - TF legs)

SID NAME	ROUTE	SID NAME	ROUTE
DUKAT 1B (14.7 NM)	VI201[A3000+;L] - VI202[L] - DUKAT	NEDAM 1B (42.5 NM)	VI201[A3000+;R] - VI203[R] - NEDAM
IKAMU 1B (59.8 NM)	VI201[A3000+;R] - VI203[R] - VI106[L] - IKAMU	TAGOL 1B (61.8 NM)	VI201[A3000+;R] - VI203[R] - VI206[L] - TAGOL
LAVAR 1B (22.6 NM)	VI201[A3000+;L] - VI202[L] - LAVAR	UPASI 1B* (34.6 NM)	VI201[A3000+;R] - VI203[L] - VI204[F075+] - UPASI
MURUN 1B (62.9 NM)	VI201[A3000+;R] - VI203[R] - VI106[L] - MURUN	UTENU 1B (62.0 NM)	VI201[A3000+;R] - VI203[R] - VI207[L] - UTENU

\* From 01 APR to 20 OCT, 0800 - 1700 UTC cross way point VI204 or VNO DME 13.4 NM at FL075 or above.

FOR DETAILED FLIGHT PROCEDURES REFER TO AIP EYVI AD 2.22

WAY POINT COORDINATES

VI106	54 49 34.9N 25 13 24.9E	VNO R341.4/D11.7	MURUN	55 28 46.6N 024 58 40.1E	VNO R341.4/D51.9
VI201	54 31 12.1N 025 12 25.5E	VNO R196.9/D7.6	NEDAM	54 57 10.4N 024 14 51.1E	VNO R291.5/D41.0
VI202	54 29 57.7N 025 17 46.8E	VNO R172.8/D8.2	TAGOL	55 28 16.8N 025 13 17.4E	VNO R350.6/D50.3
VI203	54 33 12.1N 025 03 43.9E	VNO R231.9/D9.5	UPASI	54 23 12.1N 024 16 37.3E	VNO R241.0/D38.6
VI204	54 31 50.7N 024 57 14.2E	VNO R235.5/D13.4	UTENU	55 27 42.8N 025 26 36.0E	VNO R359.3/D49.9
VI206	54 54 19.1N 025 16 14.4E	VNO R350.6/D16.2	VNO	54 38 09.8N 025 17 37.1E	
VI207	55 04 28.0N 025 22 20.1E	VNO R359.3/D26.5			
DUKAT	54 28 17.3N 025 36 55.2E	VNO R124.6/D15.0			
IKAMU	55 20 40.3N 024 38 12.5E	VNO R325.6/D48.3			
LAVAR	54 41 29.4N 025 44 12.4E	VNO R071.1/D15.8			