

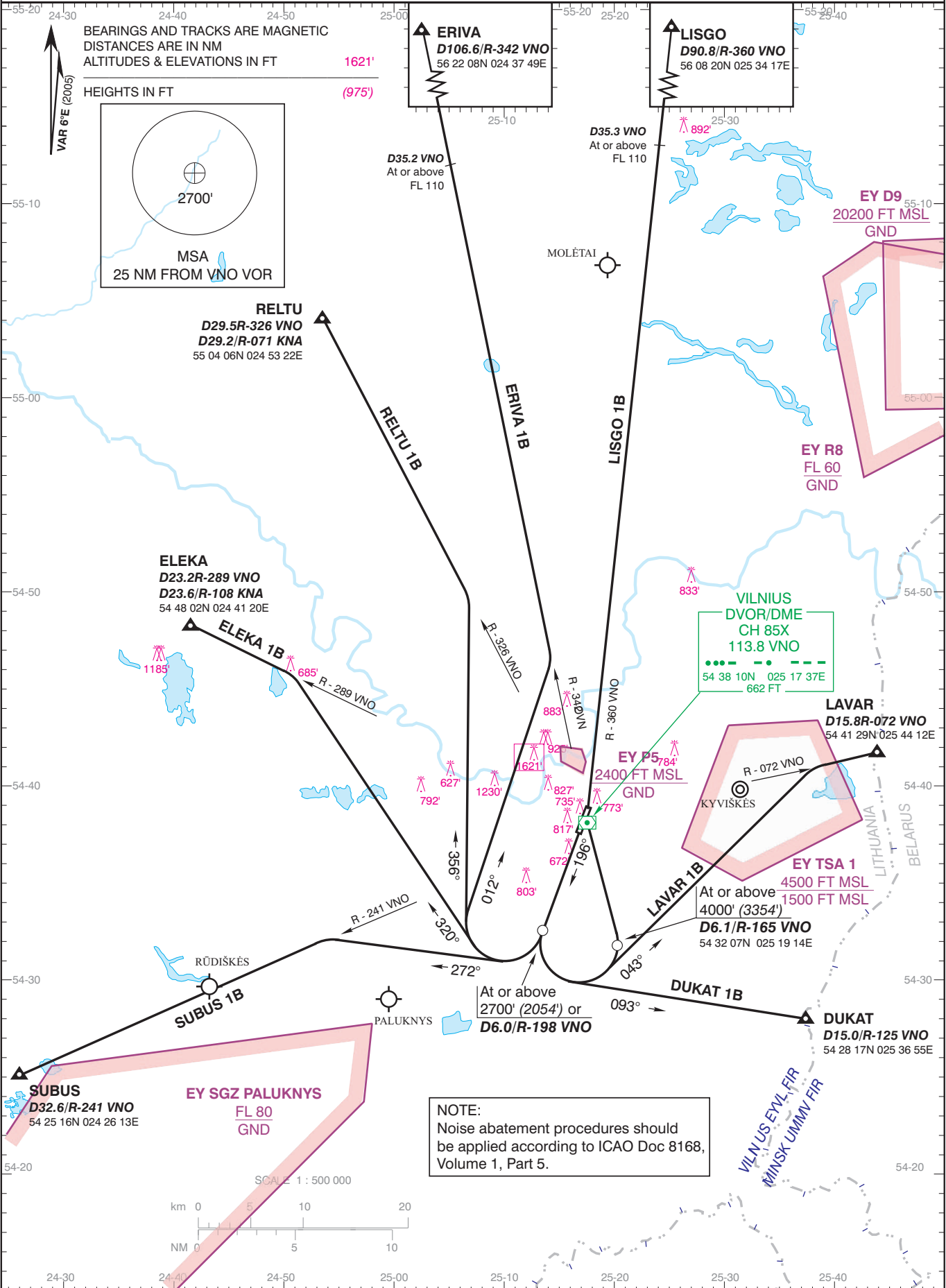
STANDARD DEPARTURE CHART -  
INSTRUMENT (SID) - ICAO  
TRANSITION LEVEL By ATC  
TRANSITION ALTITUDE 5000' (4354')

AD ELEV 646'  
HEIGHTS RELATED TO  
THR RWY 20 ELEV 646'

ATIS 125.800  
TOWER 118.200  
APPROACH 120.700

VILNIUS / International  
LITHUANIA  
SID RWY 20

DUKAT 1B, ELEKA 1B, ERIVA 1B,  
LAVAR 1B, LISGO 1B, RELTU 1B, SUBUS 1B



Changes:REP ASTRA renamed to REP ERIVA.

## STANDARD DEPARTURE ROUTES - INSTRUMENT (SID) RWY 20

After take-off climb to **4000'** except when indicated by ATC otherwise

SID	ROUTING	ALTITUDE
<b>DUKAT 1B</b>	DUKAT ONE BRAVO Straight ahead to D6.0/R-198 VNO, turn LEFT, 093° track, intercept R-125 VNO at DUKAT.	Cross (D6.0/R-198 VNO) at or above <b>2700' (2054)</b>
<b>ELEKA 1B</b>	ELEKA ONE BRAVO Straight ahead to D6.0/R-198 VNO, turn RIGHT, 320° track, intercept R-289 VNO (R-108 KNA), proceed to ELEKA.	Cross (D6.0/R-198 VNO) at or above <b>2700' (2054)</b>
<b>ERIVA 1B</b>	ERIVA ONE BRAVO Straight ahead to D6.0/R-198 VNO, turn RIGHT, 012° track, intercept R-342 VNO, proceed to ERIVA.	Cross (D6.0/R-198 VNO) at or above <b>2700' (2054)</b> D35.2/R-342 VNO at or above <b>FL110</b>
<b>LAVAR 1B</b>	LAVAR ONE BRAVO Straight ahead to D6.0/R-198 VNO, turn LEFT, 043° track, intercept R-072 VNO, proceed to LAVAR.	Cross (D6.0/R-198 VNO) at or above <b>2700' (2054)</b>
<b>LISGO 1B</b>	LISGO ONE BRAVO Straight ahead to D6.0/R-198 VNO, turn LEFT via D6.1/R-165 VNO, proceed to VNO, leaving VNO DVOR/DME intercept R-360 VNO, proceed to LISGO.	Cross (D6.0/R-198 VNO) at or above <b>2700' (2054)</b> D6.1/R-165 VNO at or above <b>4000' (3354')</b> D35.3/R-360 VNO at or above <b>FL110</b>
<b>RELTU 1B</b>	RELTU ONE BRAVO Straight ahead to D6.0/R-198 VNO, turn RIGHT, 356° track, intercept R-326 VNO, proceed to RELTU.	Cross (D6.0/R-198 VNO) at or above <b>2700' (2054)</b>
<b>SUBUS 1B</b>	SUBUS ONE BRAVO Straight ahead to D6.0/R-198 VNO, turn RIGHT, 272° track, intercept R-241 VNO, proceed to SUBUS.	Cross (D6.0/R-198 VNO) at or above <b>2700' (2054)</b>