

RNAV (GNSS, VOR/DME) OVERLAY
STANDARD DEPARTURE CHART
INSTRUMENT (SID) - ICAO

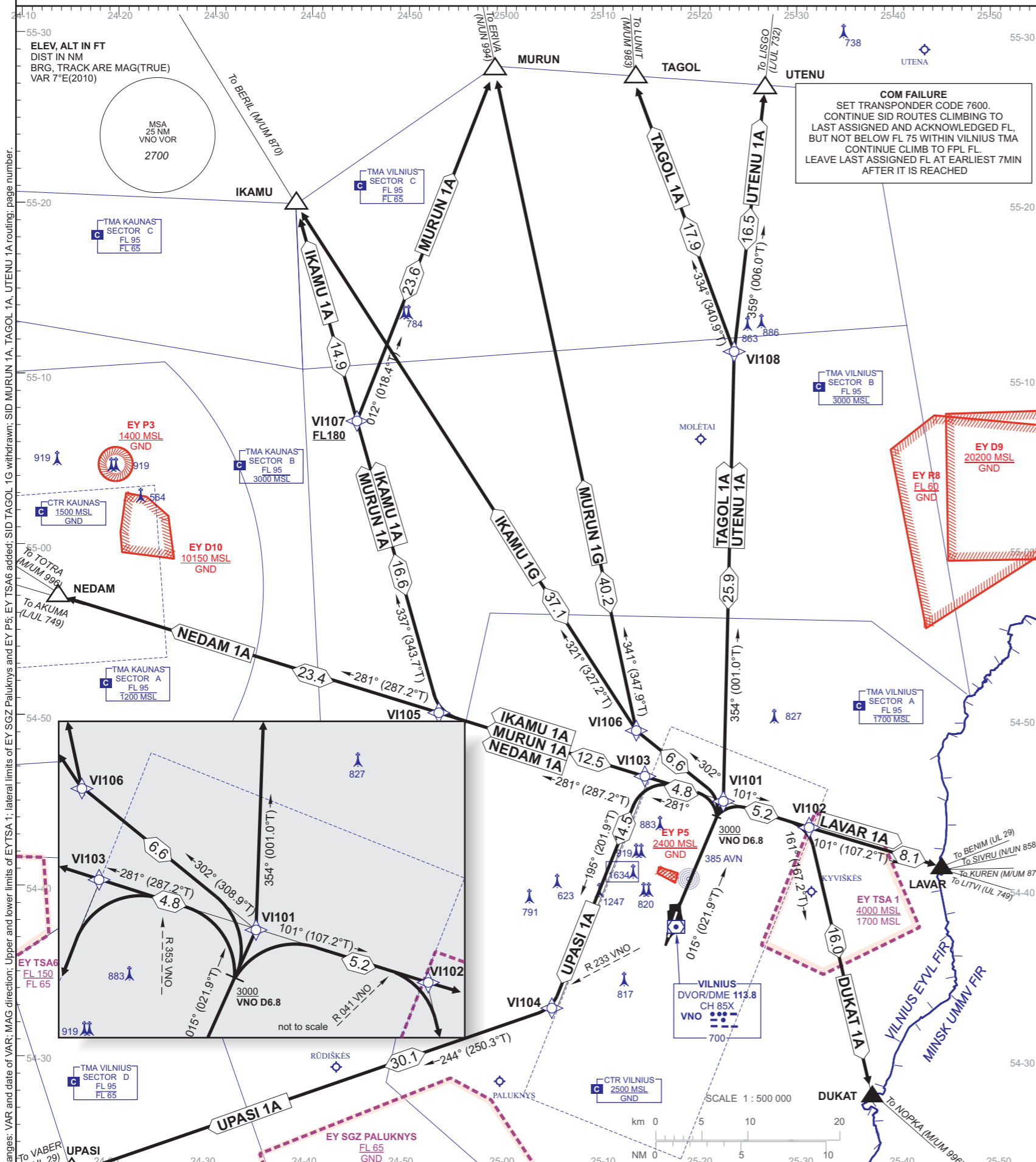
TRANSITION ALTITUDE 5000

AERODROME ELEV 646
HEIGHTS RELATED TO
THR RWY 02-ELEV 594

ATIS 125.800
TOWER 118.200
APPROACH 120.700

DUKAT 1A, IKAMU 1A, IKAMU 1G, LAVAR 1A,
MURUN 1A, MURUN 1G, NEDAM 1A,
TAGOL 1A, UPASI 1A, UTENU 1A

VILNIUS / INTL
LITHUANIA
RNAV SID RWY 02



STANDARD INSTRUMENT DEPARTURE (SID) ROUTES RWY 02

SID NAME	ROUTE
DUKAT 1A	On RWY track to VNO 6.8 NM (at 3000 FT MSL or above), then turn right to track 101°. Cross R-041 VNO, turn right to track 161° and proceed to DUKAT.
IKAMU 1A	On RWY track to VNO 6.8 NM (at 3000 FT MSL or above), then turn left to track 281°. At VNO DME 18.6 NM turn right to track 337° and proceed to IKAMU.
IKAMU 1G	On RWY track to VNO 6.8 NM (at 3000 FT MSL or above), then turn left to track 302°. At VNO DME 11.7 NM turn right to track 321° and proceed to IKAMU.
LAVAR 1A	On RWY track to VNO 6.8 NM (at 3000 FT MSL or above), then turn right to track 101° and proceed to LAVAR.
MURUN 1A	On RWY track to VNO 6.8 NM (at 3000 FT MSL or above), then turn left to track 281°. At VNO DME 18.6 NM turn right to track 337°. At VNO DME 33.8 NM (at FL 180 or above) turn right to track 012° and proceed to MURUN.
MURUN 1G	On RWY track to VNO 6.8 NM (at 3000 FT MSL or above), then turn left to track 302°. Intercept R-341 VNO and proceed to MURUN.
NEDAM 1A	On RWY track to VNO 6.8 NM (at 3000 FT MSL or above), then turn left to track 281° and proceed to NEDAM.
TAGOL 1A	On RWY track to VNO 7.8 NM (at 3000 FT MSL or above), then turn left to track 354°. At VNO DME 33.4 NM turn left to track 334° and proceed to TAGOL.
UPASI 1A	On RWY track to VNO 6.8 NM (at 3000 FT MSL or above), then turn left to track 281°. Cross R-353 VNO, turn left to track 195°. Cross R-233 VNO, turn right to track 244° and proceed to UPASI.
UTENU 1A	On RWY track to VNO 7.8 NM (at 3000 FT MSL or above), then turn left to track 354°. At VNO 33.4 NM turn right to track 359° and proceed to UTENU.

Remark:

AFTER TAKE-OFF:

- climb to 4000 FT MSL. Unless otherwise specified by ATC ;
- At 2500 FT MSL contact with Vilnius APP FREQ 120.700 MHz

RNAV SID RWY 02 WAY POINT CODING

(All segments from VI101 - TF legs)

SID NAME	ROUTE	SID NAME	ROUTE
DUKAT 1A (21.2 NM)	VI101[A3000+;R] - VI102[R] - DUKAT	MURUN 1G (46.8 NM)	VI101[A3000+;L] - VI106[R] - MURUN
IKAMU 1A (48.8 NM)	VI101[A3000+;L] - VI105[R] - IKAMU	NEDAM 1A (40.7 NM)	VI101[A3000+;L] - NEDAM
IKAMU 1G (43.7 NM)	VI101[A3000+;L] - VI106[R] - IKAMU	TAGOL 1A (43.8 NM)	VI101[A3000+;L] - VI108[L] - TAGOL
LAVAR 1A (13.3 NM)	VI101[A3000+;R] - LAVAR	UPASI 1A (49.4 NM)	VI101[A3000+;L] - VI103[L] - VI104[R] - UPASI
MURUN 1A (57.5 NM)	VI101[A3000+;L] - VI105[R] - VI107[F180+;R] - MURUN	UTENU 1A (42.4 NM)	VI101[A3000+;L] - VI108[R] - UTENU

FOR DETAILED FLIGHT PROCEDURES REFER TO AIP EYVI AD 2.22

WAY POINT COORDINATES

VI101	54 45 27.0N 025 22 17.5E	VNO R013.8/D7.8	LAVAR	54 41 29.4N 025 44 12.4E	VNO R071.1/D15.8
VI102	54 43 54.6N 025 30 51.1E	VNO R046.5/D9.6	MURUN	55 28 46.6N 024 58 40.1E	VNO R341.4/D51.9
VI103	54 46 52.6N 025 14 18.5E	VNO R341.0/D8.9	NEDAM	54 57 10.4N 024 14 51.1E	VNO R291.5/D41.0
VI104	54 33 27.6N 025 05 03.0E	VNO R230.7/D8.7	TAGOL	55 28 16.8N 025 13 17.4E	VNO R350.6/D50.3
VI105	54 50 32.2N 024 53 38.3E	VNO R305.3/D18.6	UPASI	54 23 12.1N 024 16 37.3E	VNO R241.0/D38.6
VI106	54 49 34.9N 025 13 24.9E	VNO R341.4/D11.7	UTENU	55 27 42.8N 025 26 36.0E	VNO R359.3/D49.9
VI107	55 07 05.3N 024 45 34.3E	VNO R320.4/D33.8	VNO	54 38 09.8N 025 17 37.1E	
VI108	55 11 58.3N 025 23 37.4E	VNO R359.9/D33.4			
DUKAT	54 28 17.3N 025 36 55.2E	VNO R124.6/D15.0			
IKAMU	55 20 40.3N 024 38 12.5E	VNO R325.6/D48.3			