

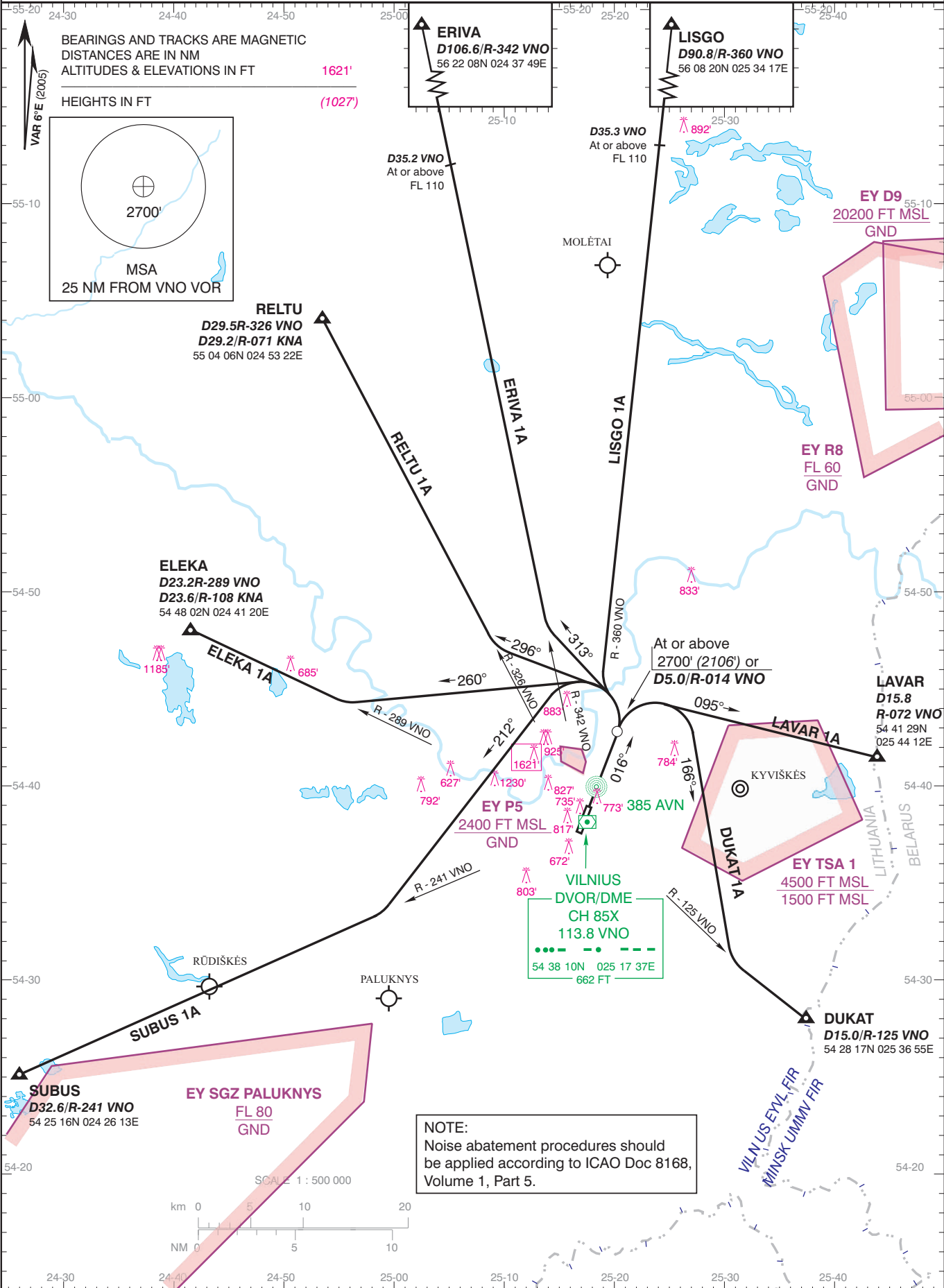
STANDARD DEPARTURE CHART -
INSTRUMENT (SID) - ICAO
TRANSITION LEVEL By ATC
TRANSITION ALTITUDE 5000' (4406')

AD ELEV 646'
HEIGHTS RELATED TO
THR RWY 02 ELEV 594'

| | |
|----------|---------|
| ATIS | 125.800 |
| TOWER | 118.200 |
| APPROACH | 120.700 |

VILNIUS / International
LITHUANIA
SID RWY 02

DUKAT 1A, ELEKA 1A, ERIVA 1A,
LAVAR 1A, LISGO 1A, RELTU 1A, SUBBUS 1A



Changes:REP ASTRA renamed to REP ERIVA, MIM withdrawn.

STANDARD DEPARTURE ROUTES - INSTRUMENT (SID) RWY 02

After take-off climb to **4000'** except when indicated by ATC otherwise

| SID | ROUTING | ALTITUDE |
|-----------------|---|---|
| DUKAT 1A | DUKAT ONE ALFA Straight ahead via AVN NDB to D5.0/R-014 VNO, turn RIGHT, 166° track, intercept R-125 VNO, proceed to DUKAT. | Cross (D5.0/R-014 VNO) at or above 2700' (2106') |
| ELEKA 1A | ELEKA ONE ALFA Straight ahead via AVN NDB to D5.0/R-014 VNO, turn LEFT, 260° track, intercept R-289 VNO (R-108 KNA), proceed to ELEKA. | Cross (D5.0/R-014 VNO) at or above 2700' (2106') |
| ERIVA 1A | ERIVA ONE ALFA Straight ahead via AVN NDB to D5.0/R-014 VNO, turn LEFT, 313° track, intercept R-342 VNO, proceed to ERIVA. | Cross (D5.0/R-014 VNO) at or above 2700' (2106') D35.2/R-342 VNO at or above FL110 |
| LAVAR 1A | LAVAR ONE ALFA Straight ahead via AVN NDB to D5.0/R-014 VNO, turn RIGHT, 095° track, intercept R-072 VNO at LAVAR. | Cross (D5.0/R-014 VNO) at or above 2700' (2106') |
| LISGO 1A | LISGO ONE ALFA Straight ahead via AVN NDB to D5.0/R-014 VNO, turn LEFT, intercept R-360 VNO, proceed to LISGO. | Cross (D5.0/R-014 VNO) at or above 2700' (2106') D35.3/R-360 VNO at or above FL110 |
| RELTU 1A | RELTU ONE ALFA Straight ahead via AVN NDB to D5.0/R-014 VNO, turn LEFT, 296° track, intercept R-326 VNO, proceed to RELTU. | Cross (D5.0/R-014 VNO) at or above 2700' (2106') |
| SUBUS 1A | SUBUS ONE ALFA Straight ahead via AVN NDB to D5.0/R-014 VNO, turn LEFT, 212° track, intercept R-241 VNO, proceed to SUBUS. | Cross (D5.0/R-014 VNO) at or above 2700' (2106') |