

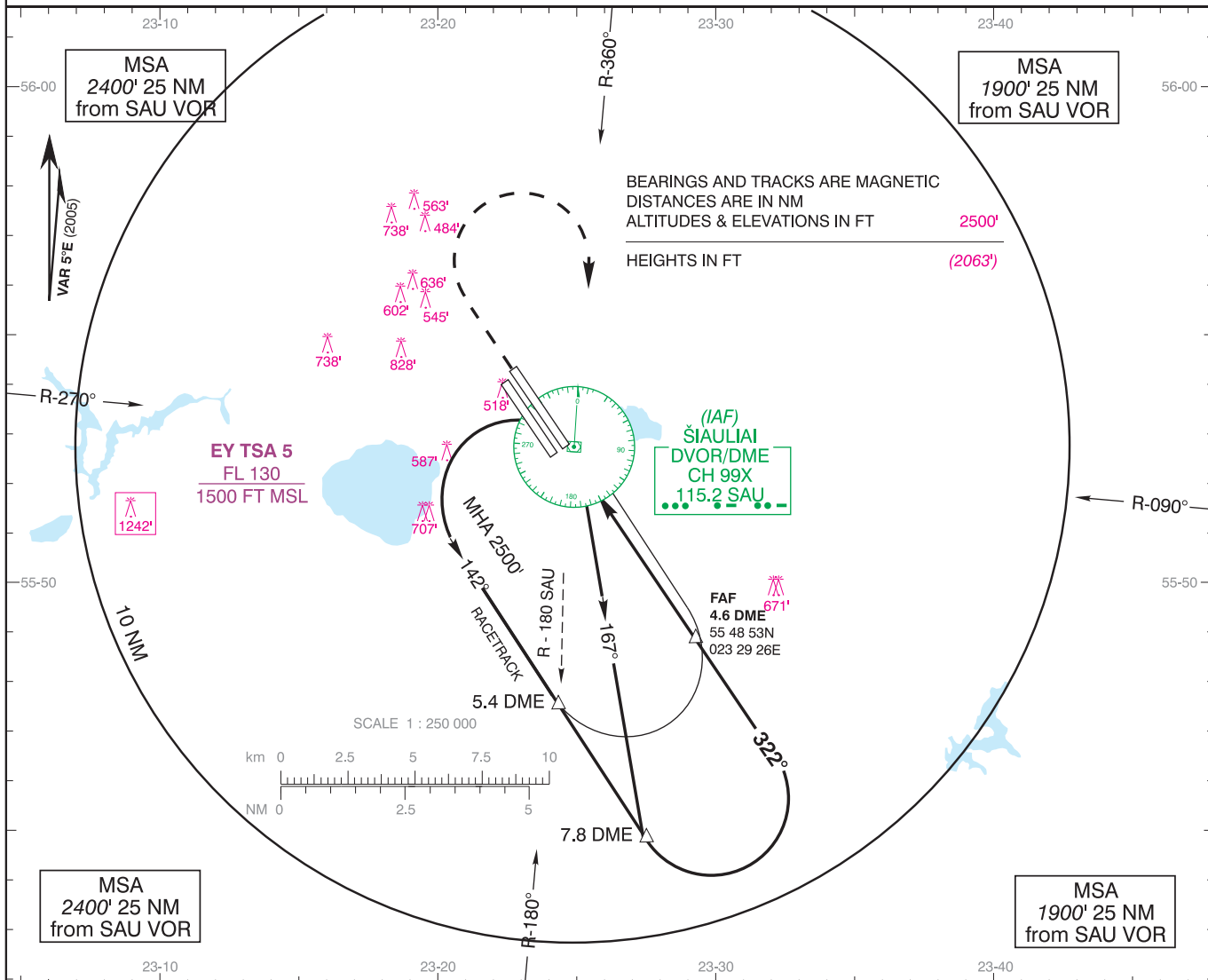
INSTRUMENT APPROACH
CHART - ICAO

AD ELEV 443'
HEIGHTS RELATED TO
THR RWY 32R ELEV 437'

TOWER 120.400

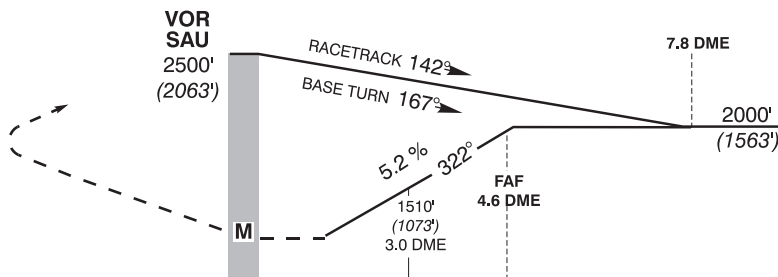
ŠIAULIAI / International
LITHUANIA
VOR DME RWY 32R

TRANSITION LEVEL By ATC
TRANSITION ALTITUDE 5000' (4563')



MISSED APPROACH PROCEDURE

Climb on R-322 to 2500' (2063'),
turn RIGHT to VOR SAU



ELEV 437'
(THR RWY 32R)

NM 10 9 8 7 6 5 4 3 2 1 0 1 2 3 4 5 6 7 8 9 NM

Aircraft Category		A	B	C	D	DISTANCE		4 DME		3 DME		2 DME	
JAR-OPS	VOR DME	920' (483') R1000 m R 1500 m	920' (483') R1200 m R 1500 m	920' (483') R1200 m R 2000 m	920' (483') R1600 m R 2000 m	Altitude		1830'		1510'		1190'	
	ALS out					Height		(1393')		(1073')		(753')	
STRAIGHT -IN RWY						GS	Kts	80	100	120	140	160	180
						FAF - MAPt (4.6NM)	min:sec	3:27	2:46	2:18	1:58	1:44	1:32
						Rate of descent (5.2%)	ft/min	420	525	630	735	840	950
CIRCLING-TO-LAND		100 KT	135 KT	180 KT	205 KT	Remarks: Mapt at VOR.							
		1130' (687') V1500m	1130' (687') V1600m	1230' (787') V2400m	1230' (787') V3600m								

Changes: New RWY added; TSA 4 realigned; TSA 5 completely withdrawn; TSA 6 is renamed to TSA 5.