

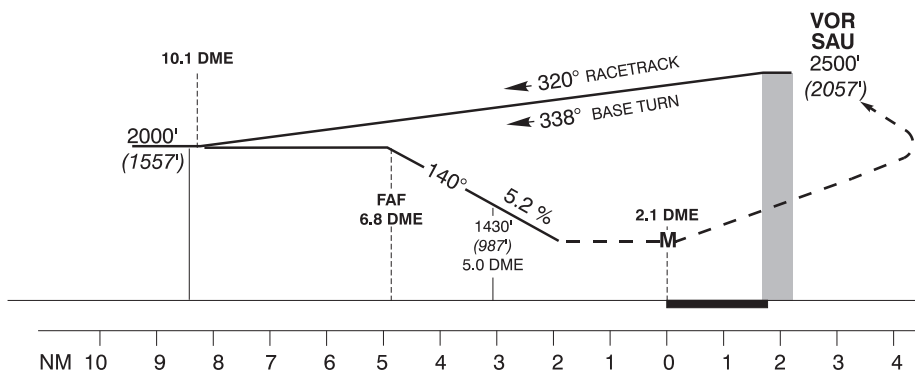
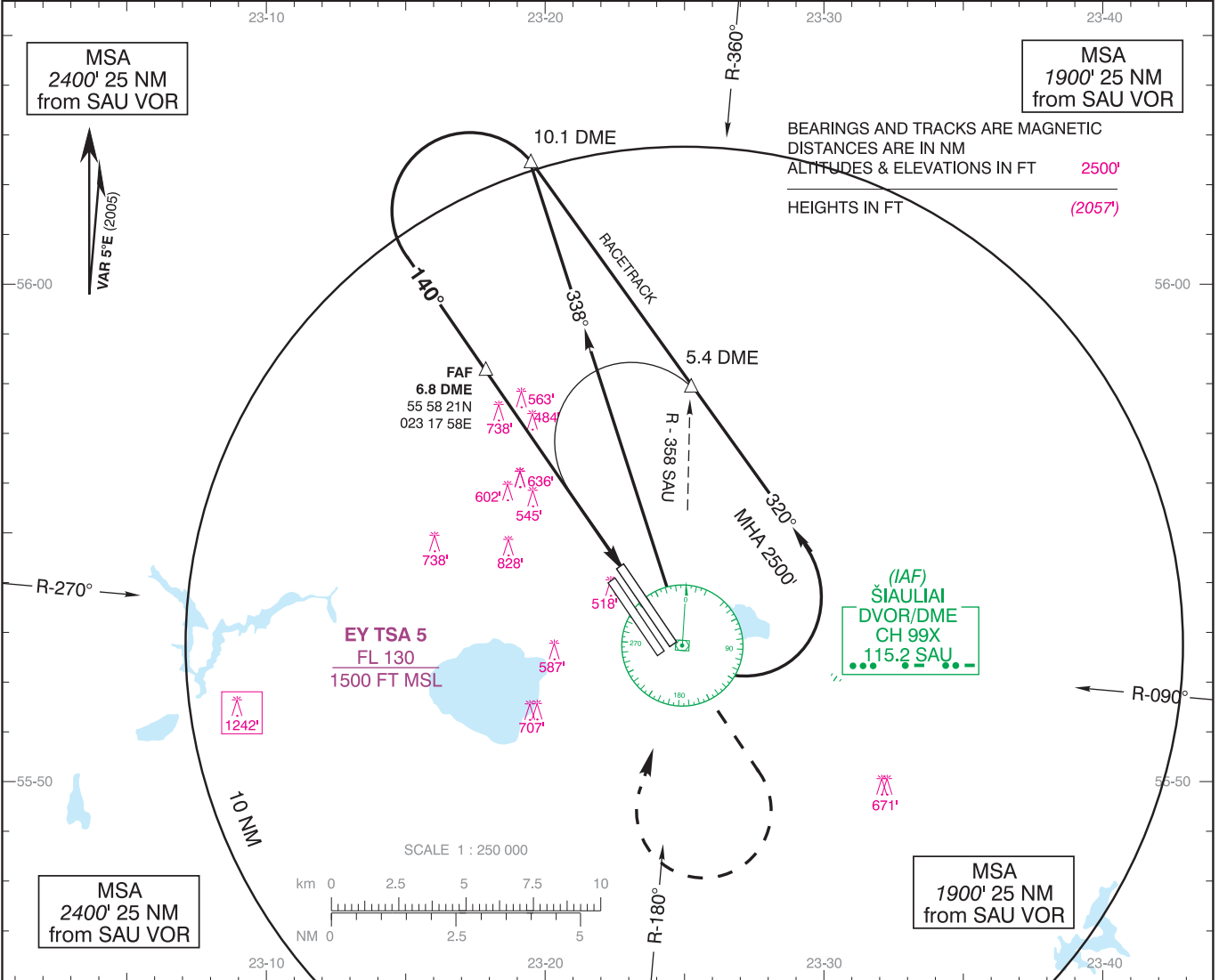
INSTRUMENT APPROACH
CHART - ICAO

AD ELEV 443'
HEIGHTS RELATED TO
THR RWY 14L ELEV 443'

TOWER 120.400

ŠIAULIAI / International
LITHUANIA
VOR DME RWY 14L

TRANSITION LEVEL By ATC
TRANSITION ALTITUDE 5000' (4557')



MISSED APPROACH PROCEDURE
Climb on R-140 to 2500' (2057'),
turn RIGHT to VOR SAU

ELEV 443'
(THR RWY 14L)

Aircraft Category		A	B	C	D	DISTANCE	6 DME	5 DME	4 DME	3 DME			
JAR-OPS	VOR DME	990' (547') R1000 m	990' (547') R1200 m	990' (547') R1200 m	990' (547') R1600 m	Altitude	1750'	1430'	1120'	800'			
	ALS out	R 1500 m	R 1500 m	R 2000 m	R 2000 m	Height	(1307')	(987')	(677')	(357')			
STRAIGHT -IN RWY						GS	Kts	80	100	120	140	160	180
						FAF - MAPt (4.7NM)	min:sec	3:32	2:49	2:21	2:01	1:46	1:34
						Rate of descent (5.2%)	ft/min	420	525	630	735	840	950
						Remarks: Mapt at 2.1 DME.							
CIRCLING-TO-LAND		100 KT	135 KT	180 KT	205 KT								
		1130' (687') V1500m	1130' (687') V1600m	1230' (787') V2400m	1230' (787') V3600m								

Changes: New RWY added; TSA 4 realigned; TSA 5 completely withdrawn; TSA 6 is renamed to TSA 5.