

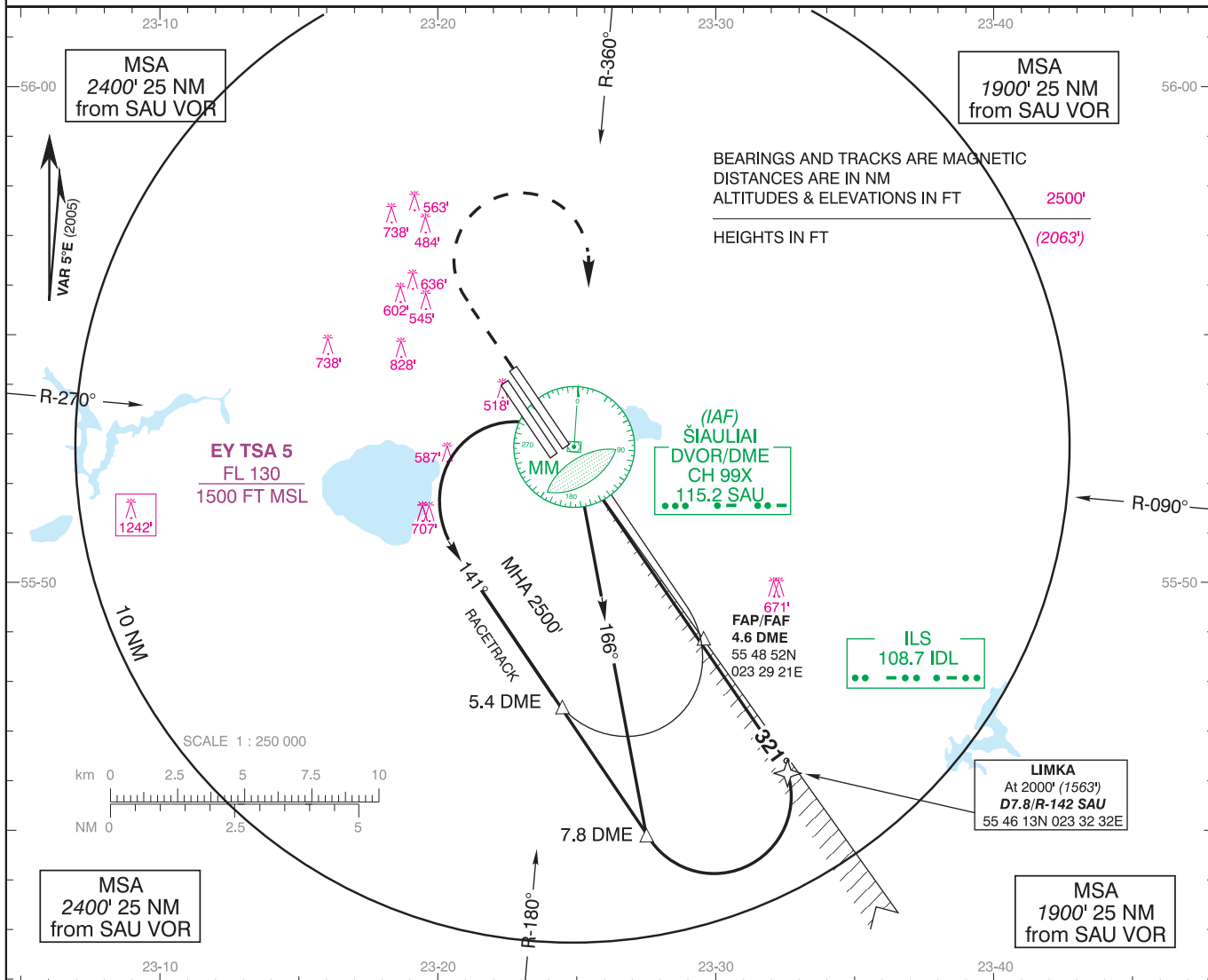
INSTRUMENT APPROACH
CHART - ICAO

AD ELEV 443'
HEIGHTS RELATED TO
THR RWY 32R ELEV 437'

TOWER 120.400

ŠIAULIAI / International
LITHUANIA
ILS DME RWY 32R

TRANSITION LEVEL By ATC
TRANSITION ALTITUDE 5000' (4563')

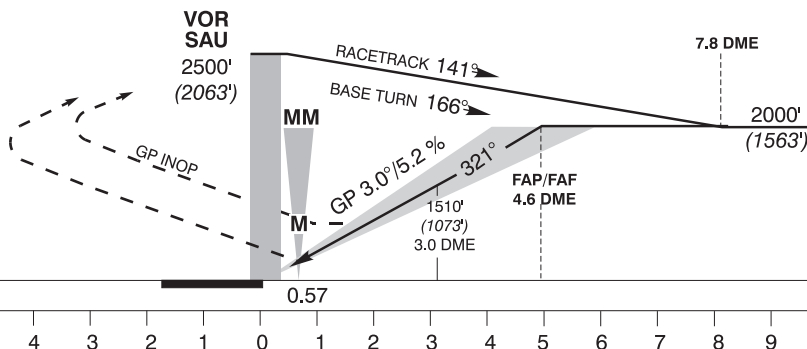


MISSED APPROACH PROCEDURE

Climb on R-322 to 2500' (2063'),
turn RIGHT to VOR SAU

ILS RDH 50'

ELEV 437'
(THR RWY 32R)



Aircraft Category		A	B	C	D	DISTANCE		4 DME		3 DME		2 DME			
JAR-OPS STRAIGHT -IN RWY	ILS DME	637' (200') R550 m	637' (200') R550 m	637' (200') R550 m	637' (200') R550 m	Altitude		1830'		1510'		1190'			
	ALS out	R 1000 m	R 1000 m	R 1000 m	R 1000 m	Height		(1393')		(1073')		(753')			
	LLZ	750' (313') R900 m	750' (313') R1000 m	750' (313') R1000 m	750' (313') R1400 m	GS		Kts		80	100	120	140	160	180
	ALS out	R 1500 m	R 1500 m	R 1800 m	R 2000 m	FAF - MAPt (4.2NM)		min:sec		3:09	2:31	2:06	1:48	1:35	1:24
CIRCLING-TO-LAND						Rate of descent (5.2%)		ft/min		420	525	630	735	840	950
		100 KT	135 KT	180 KT	205 KT	Remarks: Mapt at MM.									
		1130' (687') V1500m	1130' (687') V1600m	1230' (787') V2400m	1230' (787') V3600m										

Changes: New RWY added; TSA 4 realigned; TSA 5 completely withdrawn; TSA 6 is renamed to TSA 5.