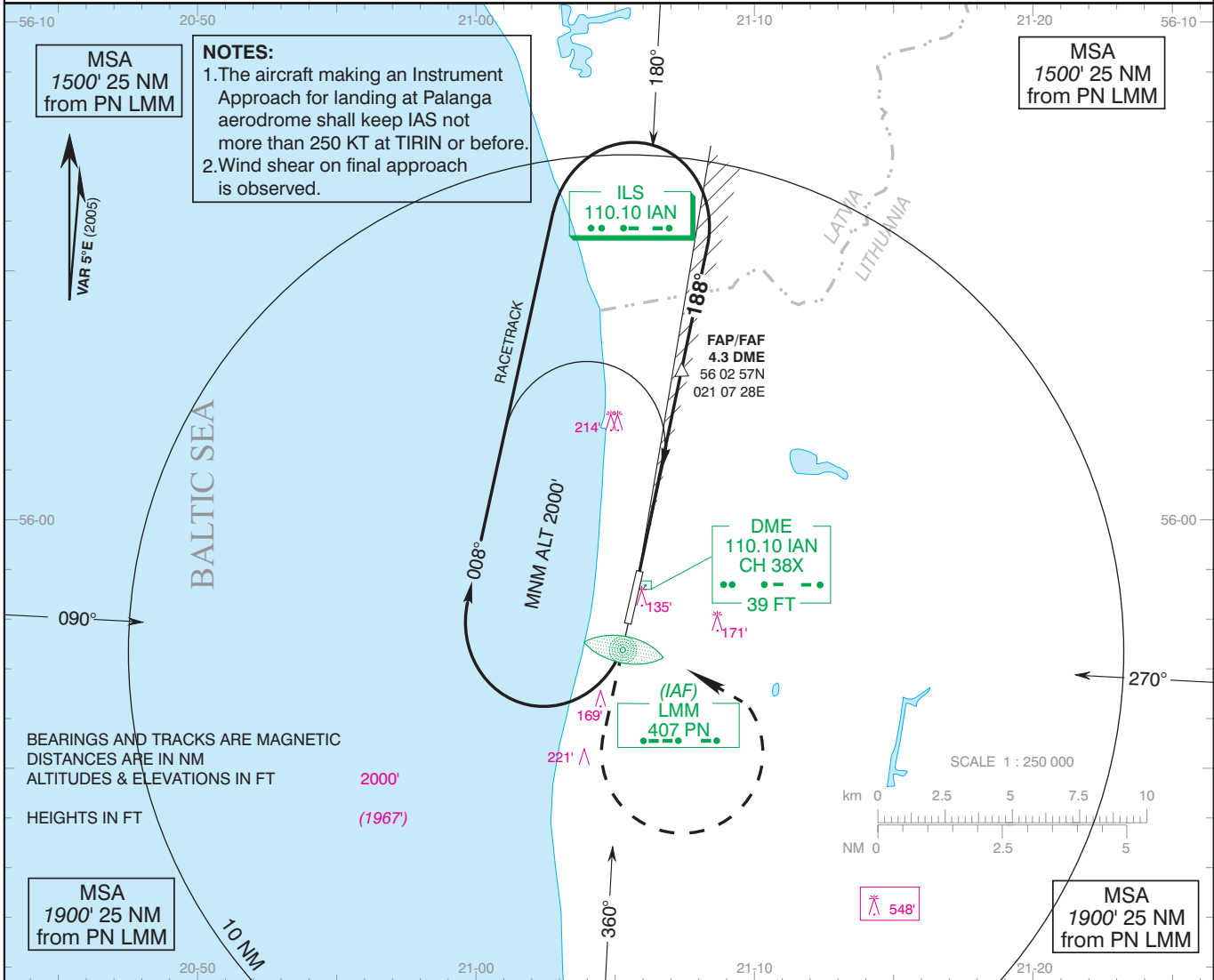


INSTRUMENT APPROACH
CHART - ICAO
TRANSITION LEVEL By ATC
TRANSITION ALTITUDE 5000' (4967')

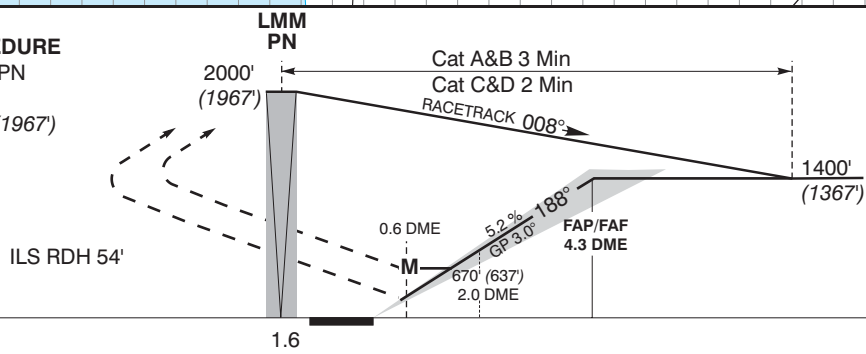
AD ELEV 33'
HEIGHTS RELATED TO
THR RWY 19 ELEV 33'

APPROACH 124.300
TOWER 118.300

PALANGA / International
LITHUANIA
ILS DME RWY 19
NDB RWY 19



MISSED APPROACH PROCEDURE
Climb straight ahead via LMM PN to 1000' (967'), turn LEFT to LMM PN climbing to 2000' (1967')



Aircraft Category		A	B	C	D	DISTANCE		IAN 4 DME		IAN 3 DME		IAN 2 DME	
JAR-OPS STRAIGHT -IN RWY	ILS	260' (227) R800 m	260' (227) R800 m	280' (247) R800 m	280' (247) R800 m	Altitude	1310'		990'		670'		
	ALS out	R1000 m	R1000 m	R1000 m	R1000 m		Height	(1277')		(957')		(637')	
	LLZ	470' (437) R1300 m	470' (437) R1400 m	470' (437) R1600 m	470' (437) R1800 m	GS		Kts	80	100	120	140	160
	ALS out	R1500 m	R1500 m	R1800 m	R2000 m	FAF - MAPt (3.7 NM)	min:sec	2:47	2:13	1:51	1:35	1:23	1:14
CIRCLING-TO-LAND	NDB	520' (487) R1500 m	520' (487) R1500 m	520' (487) R1800 m	520' (487) R2000 m	Rate of descent (5.2%)	ft/min	420	525	630	735	840	950
	ALS out	R1500 m	R1500 m	R2000 m	R2000 m	Remarks: MAPt at 0.6 IAN DME							
		100 KT	135 KT	180 KT	205 KT								
		520' (487) V1500m	530' (497) V1600m	630' (597) V2400m	730' (697) V3600m								

Changes: new LMM RWY 01; NDB RWY 19 withdrawn; obstacles; MAPt.