

STANDARD ARRIVAL CHART
INSTRUMENT (STAR) - ICAO

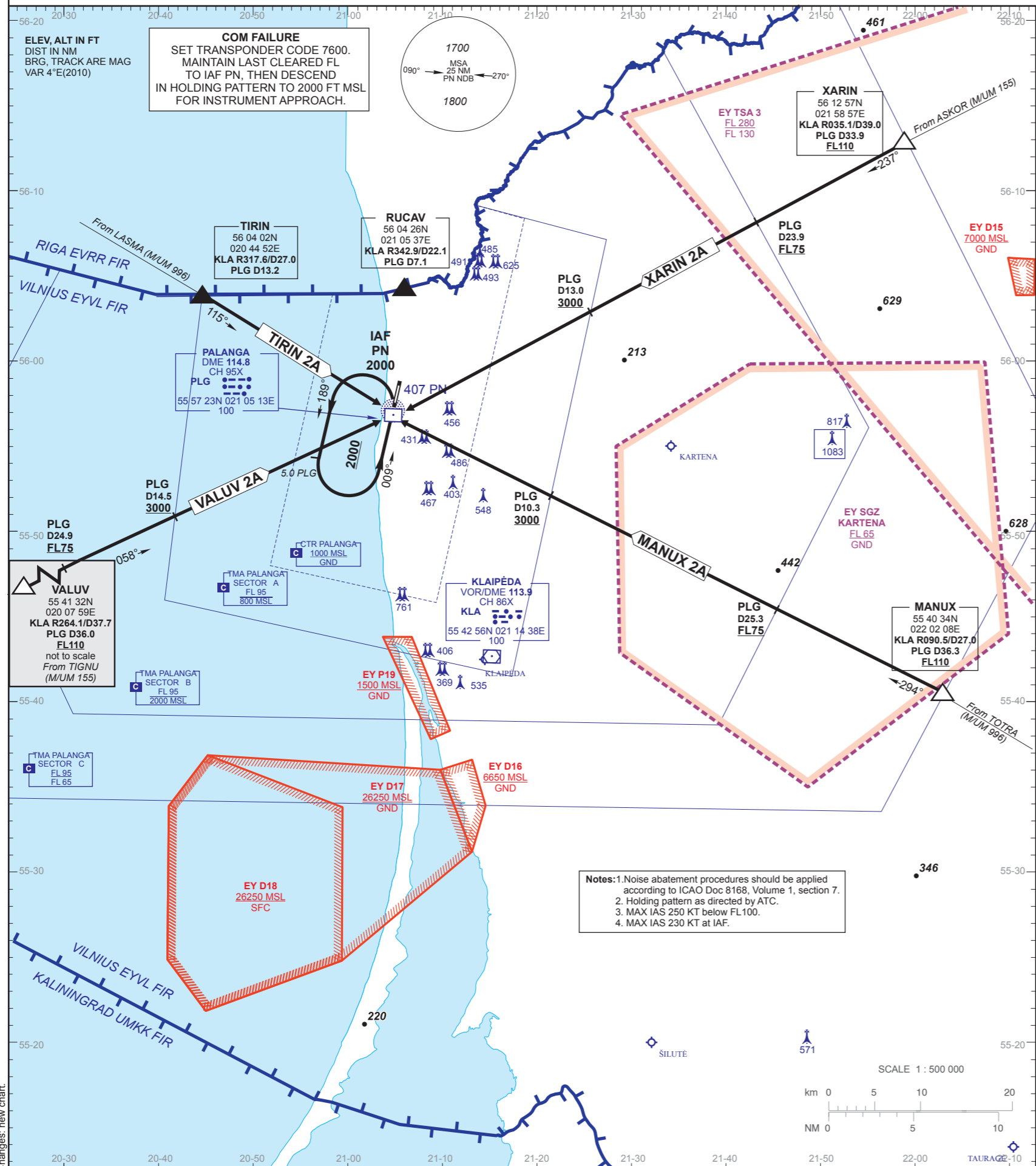
TRANSITION ALTITUDE 5000

AERODROME ELEV 33
HEIGHTS RELATED TO
THR RWY 01/19-ELEV 33

ATIS 127.800
APPROACH 124.300
TOWER 118.300

MANUX 2A, TIRIN 2A,
VALUV 2A, XARIN 2A

PALANGA / INTL
LITHUANIA
STAR RWY 01/19



STANDARD INSTRUMENT ARRIVAL (STAR) ROUTES RWY 01/19

STAR NAME	ROUTE	RESTRICTIONS	
		SPEED	FL/ALTITUDE
MANUX 2A*	MANUX TWO ALFA From MANUX on track 294° proceed to IAF PN.	Max IAS 250 KT below FL 100. Passing IAF PN max IAS 230 KT.	Cross MANUX at FL110 or above. Cross PLG DME 25.3 NM at FL75 or above. Cross PLG DME 10.3 NM at 3000 FT MSL or above. Cross PN at 2000 FT MSL.
TIRIN 2A	TIRIN TWO ALFA From TIRIN on track 115° proceed to IAF PN.	Max IAS 250 KT below FL 100. Passing IAF PN max IAS 230 KT.	Cross PN at 2000 FT MSL.
VALUV 2A	VALUV TWO ALFA From VALUV on track 058° proceed to IAF PN.	Max IAS 250 KT below FL 100. Passing IAF PN max IAS 230 KT.	Cross VALUV at FL110 or above. Cross PLG DME 24.9 NM at FL75 or above. Cross PLG DME 14.5 NM at 3000 FT MSL or above. Cross PN at 2000 FT MSL.
XARIN 2A	XARIN TWO ALFA From XARIN on track 237° proceed to IAF PN.	Max IAS 250 KT below FL 100. Passing IAF PN max IAS 230 KT.	Cross XARIN at FL110 or above. Cross PLG DME 23.9 NM at FL75 or above. Cross PLG DME 13.0 NM at 3000 FT MSL or above. Cross PN at 2000 FT MSL.

*During activity Kartena SGZ expect FL restriction by ATC.

Changes: new chart