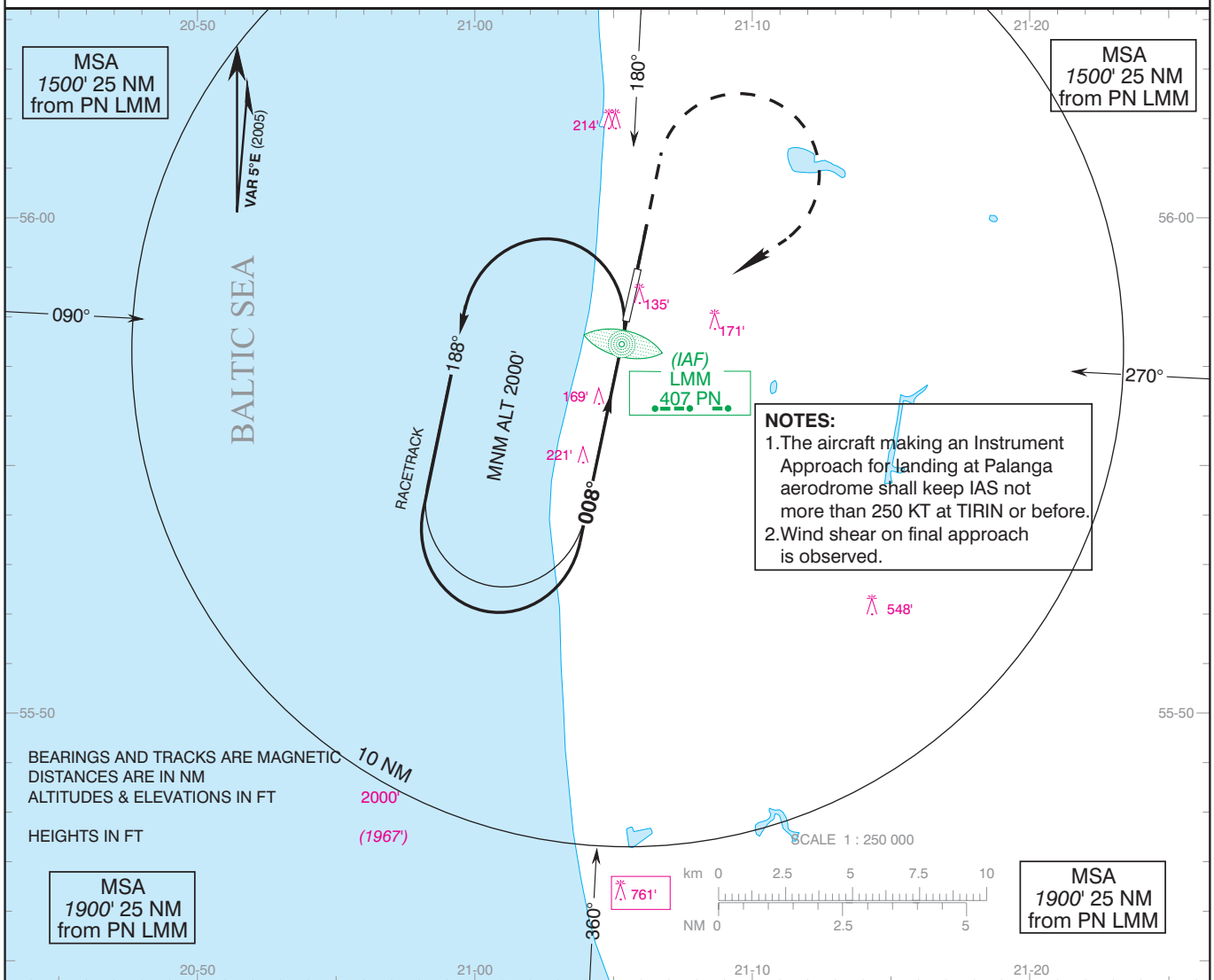


INSTRUMENT APPROACH
CHART - ICAO
TRANSITION LEVEL By ATC
TRANSITION ALTITUDE 5000' (4967')

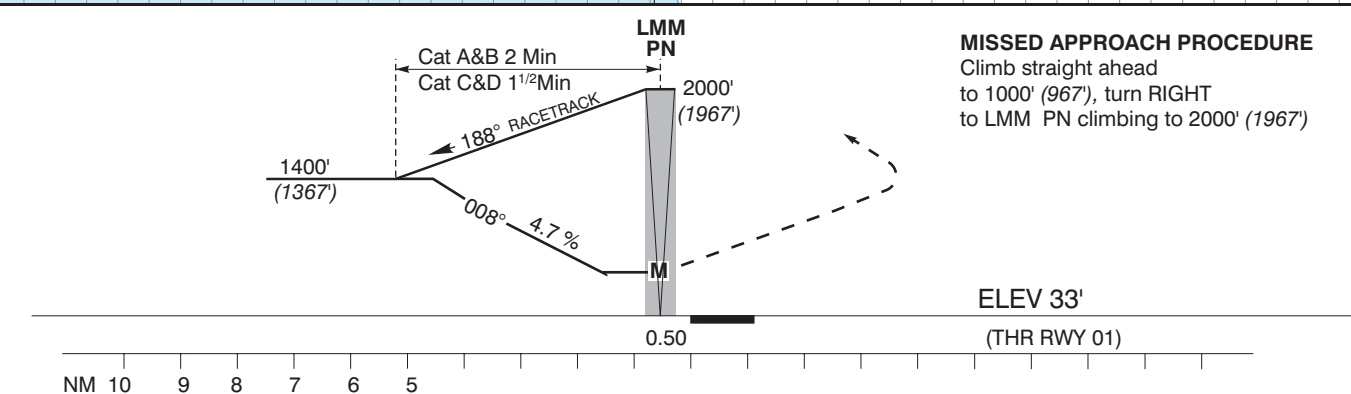
AD ELEV 33'
HEIGHTS RELATED TO
THR RWY 01 ELEV 33'

APPROACH 124.300
TOWER 118.300

PALANGA / International
LITHUANIA
NDB RWY 01



NOTES:
1. The aircraft making an Instrument Approach for landing at Palanga aerodrome shall keep IAS not more than 250 KT at TIRIN or before.
2. Wind shear on final approach is observed.



Aircraft Category		A	B	C	D
JAR-OPS	NDB	520' (487) R1500 m	520' (487) R1500 m	520' (487) R1800 m	520' (487) R2000 m
	ALS out	R1500 m	R1500 m	R2000 m	R2000 m
STRAIGHT-IN RWY					
CIRCLING-TO-LAND		100 KT	135 KT	180 KT	205 KT
		520' (487) V1500m	530' (497) V1600m	630' (597) V2400m	730' (697) V3600m

GS	Kts	80	100	120	140	160	180
Rate of descent (4.7%)	ft/min	380	470	565	655	755	845
Remarks: MAPt at LMM PN							

Changes: RWY 01 ILS withdrawn; new LMM RWY 01; NDB RWY 19 withdrawn; obstacles; MAPt.