

STANDARD DEPARTURE CHART
INSTRUMENT (SID) - ICAO

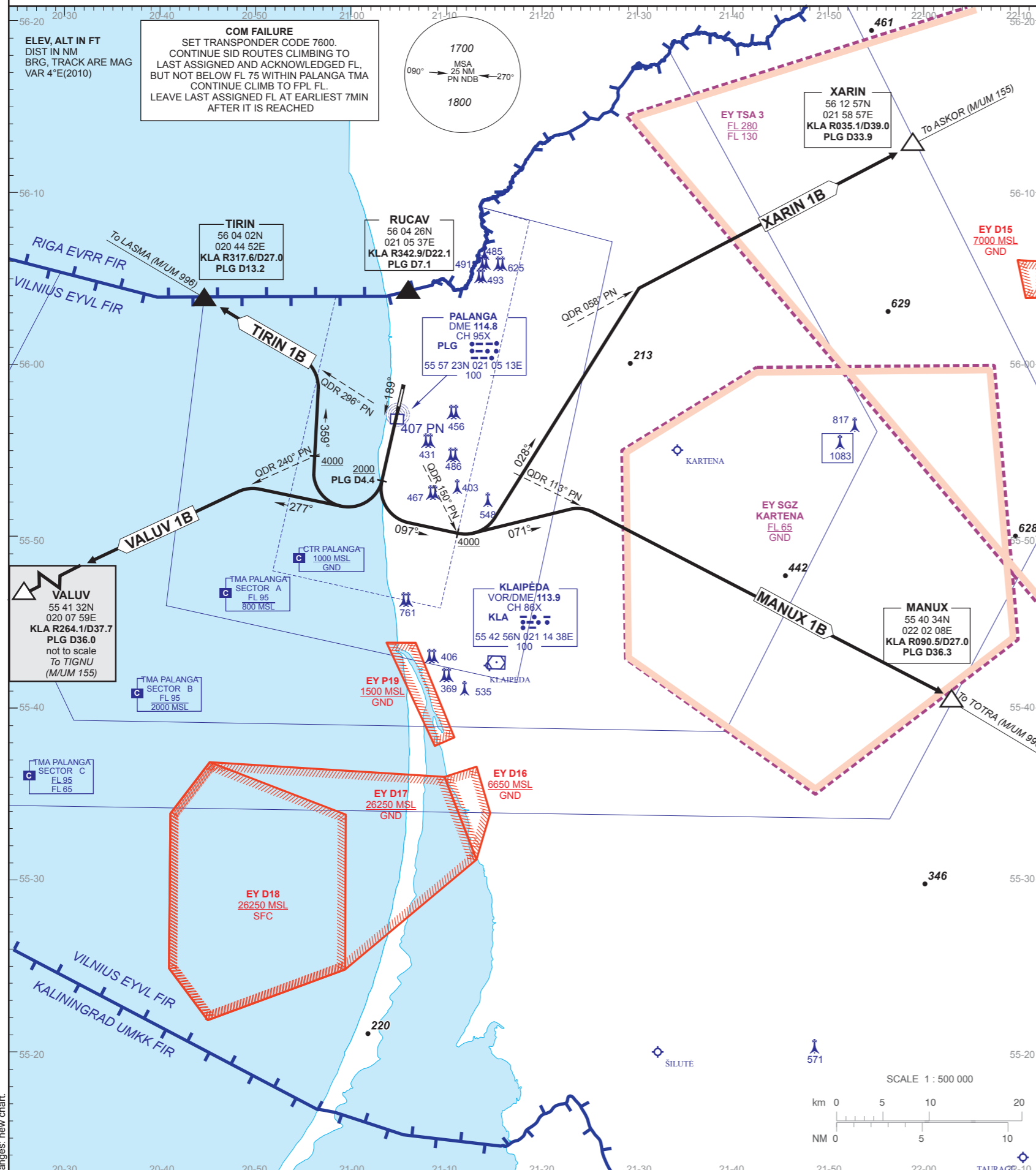
TRANSITION ALTITUDE 5000

AERODROME ELEV 33
HEIGHTS RELATED TO
THR RWY 19-ELEV 33

ATIS 127.800
APPROACH 124.300
TOWER 118.300

MANUX 1B, TIRIN 1B,
VALUV 1B, XARIN 1B

PALANGA / INTL
LITHUANIA
SID RWY 19



STANDARD INSTRUMENT DEPARTURE (SID) ROUTES RWY 19

SID NAME	ROUTE	AFTER TAKE-OFF	
		CLIMB TO	CONTACT
MANUX 1B	MANUX ONE BRAVO On RWY track to PLG DME 4.4 NM (at 2000 FT MSL or above), then turn left to track 097°. Cross QDR-150 PN (at 4000 FT MSL or above), turn left to track 071°. Intercept QDR-113 PN and proceed to MANUX.	4000 FT MSL. Unless otherwise specified by ATC.	At 1000 FT MSL with Palanga APP FREQ 124.300 MHz
TIRIN 1B	TIRIN ONE BRAVO On RWY track to PLG DME 4.4 NM (at 2000 FT MSL or above), then turn right to track 359°. Cross QDR-240 PN at 4000 FT MSL or above. Intercept QDR-296 PN and proceed to TIRIN.	4000 FT MSL. Unless otherwise specified by ATC.	At 1000 FT MSL with Palanga APP FREQ 124.300 MHz
VALUV 1B	VALUV ONE BRAVO On RWY track to PLG DME 4.4 NM (at 2000 FT MSL or above), then turn right to track 277°. Intercept QDR-240 PN and proceed to VALUV.	4000 FT MSL. Unless otherwise specified by ATC.	At 1000 FT MSL with Palanga APP FREQ 124.300 MHz
XARIN 1B	XARIN ONE BRAVO On RWY track to PLG DME 4.4 NM (at 2000 FT MSL or above), then turn left to track 097°. Cross QDR-150 PN (at 4000 FT MSL or above), turn left to track 028°. Intercept QDR-058 PN and proceed to XARIN.	4000 FT MSL. Unless otherwise specified by ATC.	At 1000 FT MSL with Palanga APP FREQ 124.300 MHz

Notes: 1. Aircraft proceeding on SID shall use PDG 6.6% (400 FT/NM) up to 4000 FT MSL. Aircraft unable to conform with this procedure shall inform ATC accordingly.
2. Noise abatement procedures should be applied according to ICAO Doc. 8168, Volume 1, section 7.

Changes: new chart