

STANDARD DEPARTURE CHART  
INSTRUMENT (SID) - ICAO

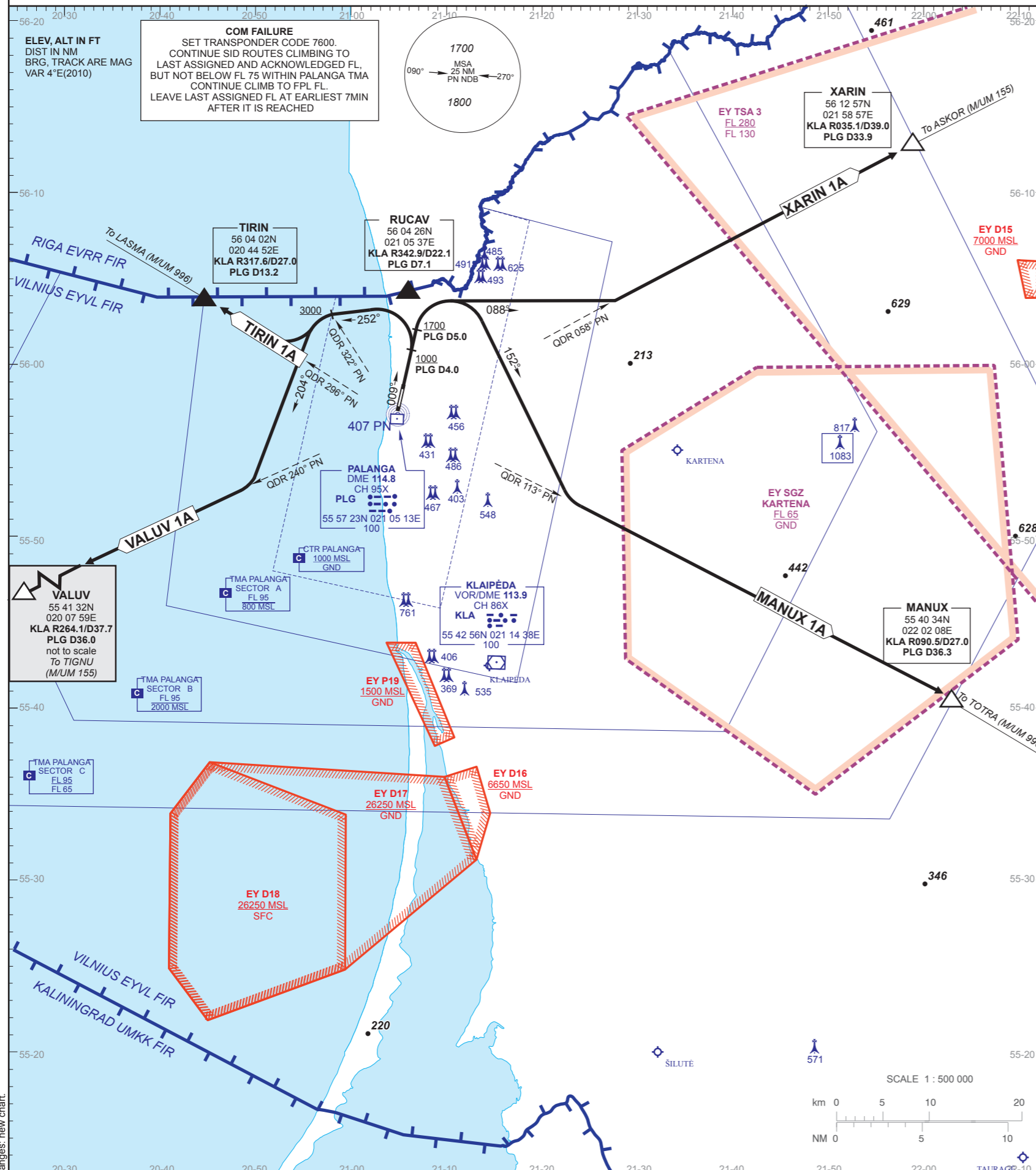
TRANSITION ALTITUDE 5000

AERODROME ELEV 33  
HEIGHTS RELATED TO  
THR RWY 01-ELEV 33

ATIS 127.800  
APPROACH 124.300  
TOWER 118.300

MANUX 1A, TIRIN 1A,  
VALUV 1A, XARIN 1A

PALANGA / INTL  
LITHUANIA  
SID RWY 01



STANDARD INSTRUMENT DEPARTURE (SID) ROUTES RWY 01

SID NAME	ROUTE	AFTER TAKE-OFF	
		CLIMB TO	CONTACT
<b>MANUX 1A</b>	MANUX ONE ALFA On RWY track to PLG DME 5.0 NM (at 1700 FT MSL or above), then turn right to track 152°. Intercept QDR-113 PN and proceed to MANUX.	4000 FT MSL. Unless otherwise specified by ATC.	At 1000 FT MSL with Palanga APP FREQ 124.300 MHz
<b>TIRIN 1A</b>	TIRIN ONE ALFA On RWY track to PLG DME 4.0 NM (at 1000 FT MSL or above), then turn left to track 252°. Cross QDR-322 PN (at 3000 FT MSL or above), turn left to track 204°. Intercept QDR-296 PN and proceed to TIRIN.	4000 FT MSL. Unless otherwise specified by ATC.	At 1000 FT MSL with Palanga APP FREQ 124.300 MHz
<b>VALUV 1A</b>	VALUV ONE ALFA On RWY track to PLG DME 4.0 NM (at 1000 FT MSL or above), then turn left to track 252°. Cross QDR-322 PN (at 3000 FT MSL or above), turn left to track 204°. Intercept QDR-240 PN and proceed to VALUV.	4000 FT MSL. Unless otherwise specified by ATC.	At 1000 FT MSL with Palanga APP FREQ 124.300 MHz
<b>XARIN 1A</b>	XARIN ONE ALFA On RWY track to PLG DME 5.0 NM (at 1700 FT MSL or above), then turn right to track 088°. Intercept QDR-058 PN and proceed to XARIN.	4000 FT MSL. Unless otherwise specified by ATC.	At 1000 FT MSL with Palanga APP FREQ 124.300 MHz

**Notes:** 1. Aircraft proceeding on SID shall use PDG 6.6% (400 FT/NM) up to 4000 FT MSL. Aircraft unable to conform with this procedure shall inform ATC accordingly.  
2. Noise abatement procedures should be applied according to ICAO Doc. 8168, Volume 1, section 7.

Changes: new chart