

STANDARD ARRIVAL CHART  
INSTRUMENT (STAR) - ICAO

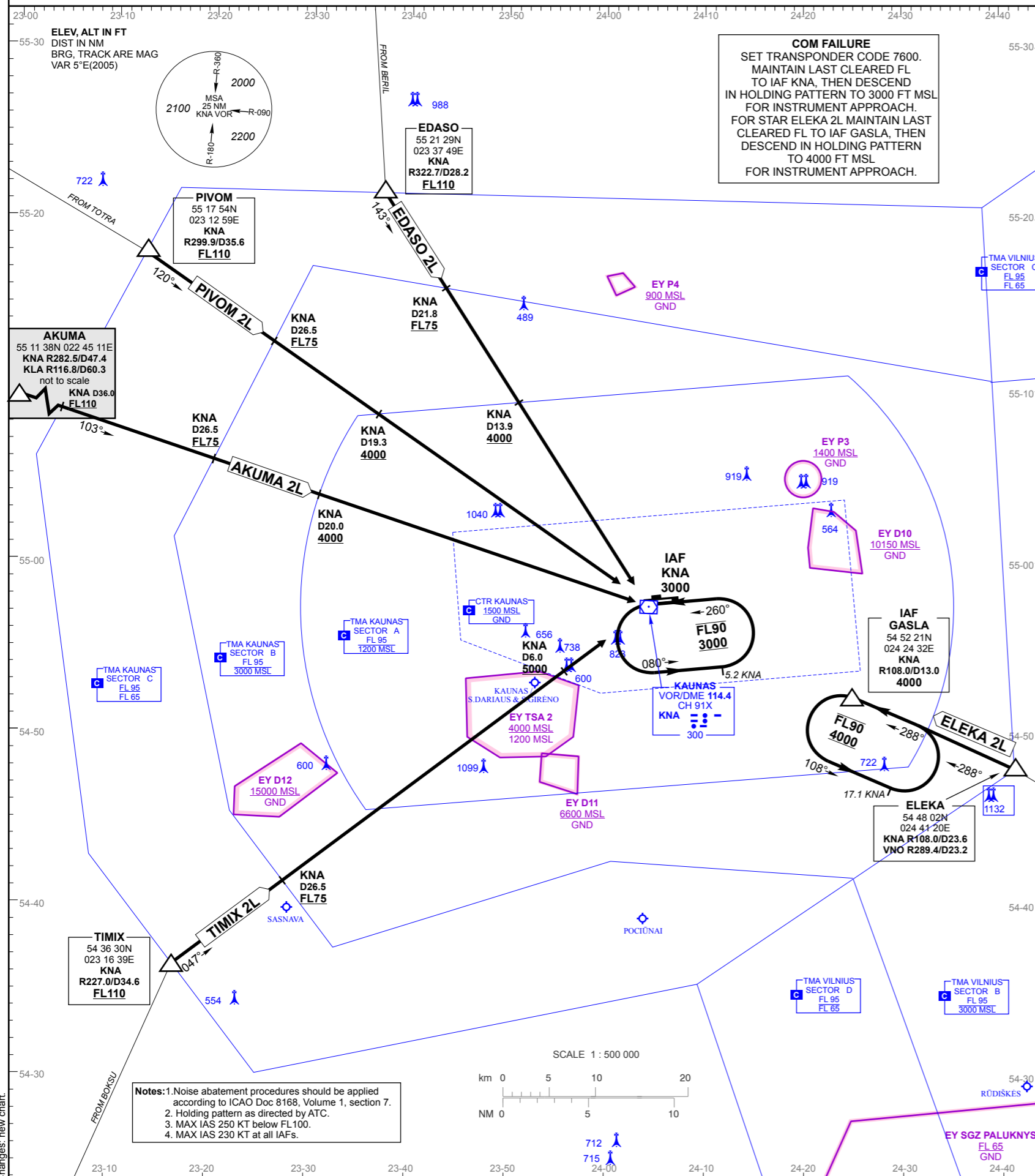
TRANSITION ALTITUDE 5000

**AERODROME ELEV 256**  
HEIGHTS RELATED TO  
THR RWY 26-ELEV 256

ATIS 129.050  
APPROACH 124.200  
TOWER 118.500

AKUMA 2L, EDASO 2L,  
ELEKA 2L, PIVOM 2L, TIMIX 2L

**KAUNAS / INTL**  
**LITHUANIA**  
**STAR RWY 26**



STANDARD INSTRUMENT ARRIVAL (STAR) ROUTES RWY 26

| STAR NAME       | ROUTE   | RESTRICTIONS   |   |
|-----------------|---|--|---|
|                 |   | SPEED  | FL/ALTITUDE   |
| <b>AKUMA 2L</b> | AKUMA TWO LIMA<br>From AKUMA on track 103° proceed to IAF KNA.                | Max IAS 250 KT below FL 100. Passing IAF KNA max IAS 230 KT.   | Cross KNA DME 36.0 NM at FL110 or above. Cross KNA DME 26.5 NM at FL75 or above. Cross KNA DME 20.0 NM at 4000 FT MSL or above. Cross KNA at 3000 FT MSL. |
| <b>EDASO 2L</b> | EDASO TWO LIMA<br>From EDASO turn left to track 143° and proceed to IAF KNA.  | Max IAS 250 KT below FL 100. Passing IAF KNA max IAS 230 KT.   | Cross EDASO at FL110 or above. Cross KNA DME 21.8 NM at FL75 or above. Cross KNA DME 13.9 NM at 4000 FT MSL or above. Cross KNA at 3000 FT MSL.           |
| <b>ELEKA 2L</b> | ELEKA TWO LIMA<br>From ELEKA proceed on track 288° to IAF GASLA.              | Max IAS 250 KT below FL 100. Passing IAF GASLA max IAS 230 KT. | Cross GASLA at 4000 FT MSL.   |
| <b>PIVOM 2L</b> | PIVOM TWO LIMA<br>From PIVOM turn right to track 120° proceed to IAF KNA.     | Max IAS 250 KT below FL 100. Passing IAF KNA max IAS 230 KT.   | Cross PIVOM at FL110 or above. Cross KNA DME 26.5 NM at FL75 or above. Cross KNA DME 19.3 NM at 4000 FT MSL or above. Cross KNA at 3000 FT MSL.           |
| <b>TIMIX 2L</b> | TIMIX TWO LIMA<br>From TIMIX turn right to track 047° and proceed to IAF KNA. | Max IAS 250 KT below FL 100. Passing IAF KNA max IAS 230 KT.   | Cross TIMIX at FL110 or above. Cross KNA DME 26.5 NM at FL75 or above. Cross KNA DME 6.0 NM at 5000 FT MSL or above. Cross KNA at 3000 FT MSL.            |