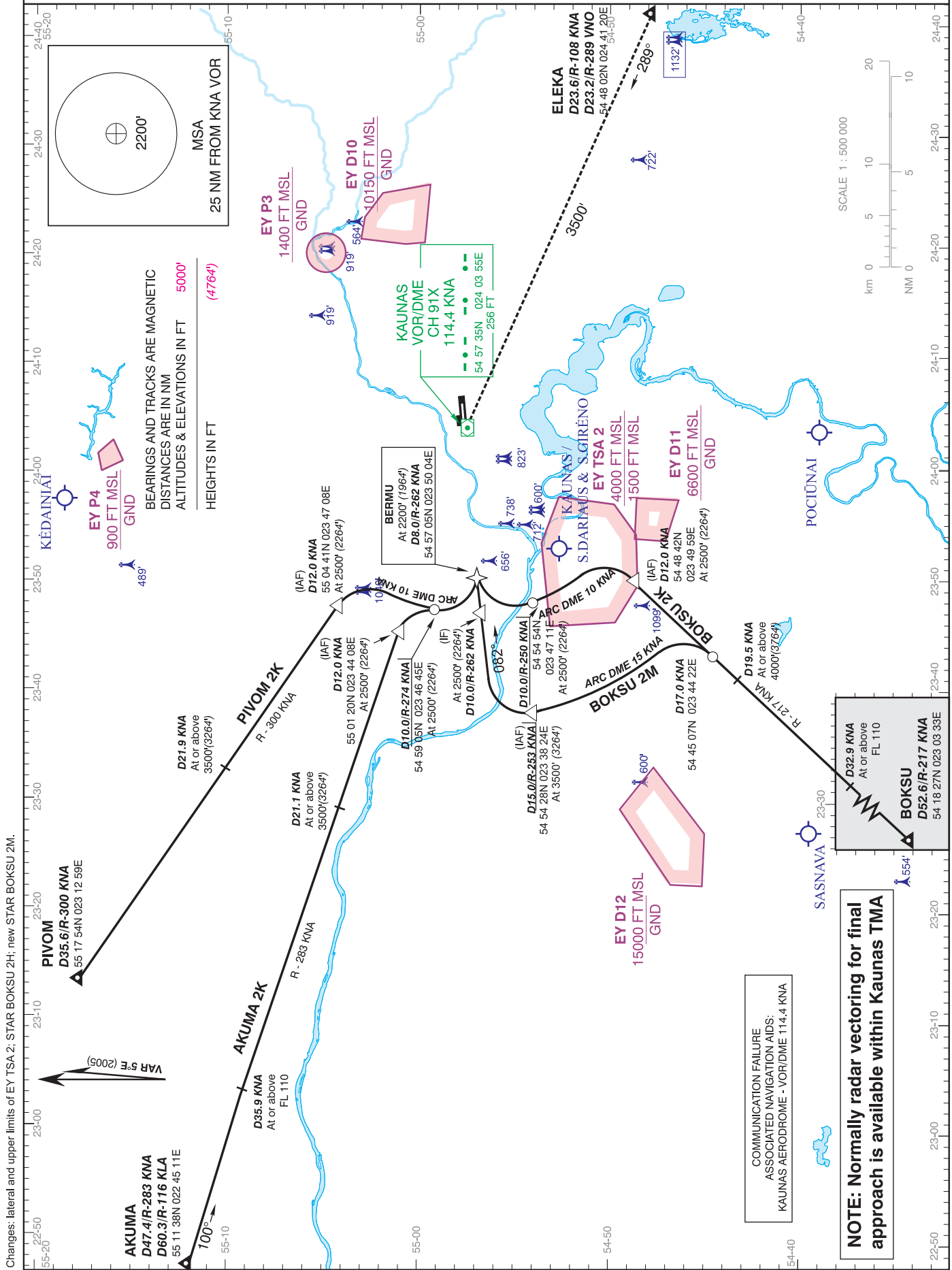


STANDARD ARRIVAL CHART
INSTRUMENT (STAR) - ICAO
TRANSITION LEVEL By ATC
TRANSITION ALTITUDE 5000' (4764')

AD ELEV 256'
HEIGHTS RELATED TO
THR RWY 08 ELEV 236'

APPROACH 124.200
TOWER 118.500

KAUNAS / International
LITHUANIA
STAR RWY 08
AKUMA 2K, BOKSU 2K, BOKSU 2M, PIVOM 2K



Changes: lateral and upper limits of EY TSA 2; STAR BOKSU 2H; new STAR BOKSU 2M.

STANDARD ARRIVAL ROUTES - INSTRUMENT (STAR) RWY 08

STAR	ROUTING	ALTITUDE
AKUMA 2K	AKUMA TWO KILO After passing AKUMA proceed on R-283 KNA, passing D12.0 KNA, turn RIGHT via D10.0/R-274 KNA, turn LEFT to intercept final approach.	Cross (D35.9/R-283 KNA) at or above FL110. D21.1/R-283 KNA at or above 3500' (3264') . D12.0/R-283 KNA at 2500' (2264') . BERMU (D8.0/R-262 KNA) at 2200' (1964') .
BOKSU 2K	BOKSU TWO KILO After passing BOKSU proceed on R-217 KNA, passing D12.0 KNA, turn LEFT to intercept ARC DME 10.0 KNA, at R-250 KNA turn RIGHT to intercept final approach.	Cross (D32.9/R-217 KNA) at or above FL110 . D19.5/R-217 KNA at or above 4000' (3764') . D12.0/R-217 KNA at 2500' (2264') . BERMU (D8.0/R-262 KNA) at 2200' (1964') .
BOKSU 2M	BOKSU TWO MIKE After passing BOKSU proceed on R-217 KNA, passing D17.0 KNA, turn LEFT to intercept ARC DME 15.0 KNA, at R-253 KNA turn RIGHT to intercept final approach.	Cross (D32.9/R-217 KNA) at or above FL110 . D19.5/R-217 KNA at or above 4000' (3764') . D15.0/R-253 KNA at 3500' (3264') . BERMU (D8.0/R-262 KNA) at 2200' (1964') .
PIVOM 2K	PIVOM TWO KILO After passing PIVOM proceed on R-300 KNA, passing D12.0 KNA, turn RIGHT to intercept ARC DME 10.0 KNA, at R-274 KNA turn LEFT to intercept final approach.	Cross (D21.9/R-300 KNA) at or above 3500' (3264') . D12.0/R-300 KNA at 2500' (2264') . BERMU (D8.0/R-262 KNA) at 2200' (1964') .

Note: From ELEKA proceed to KNA VOR/DME, execute instrument approach.