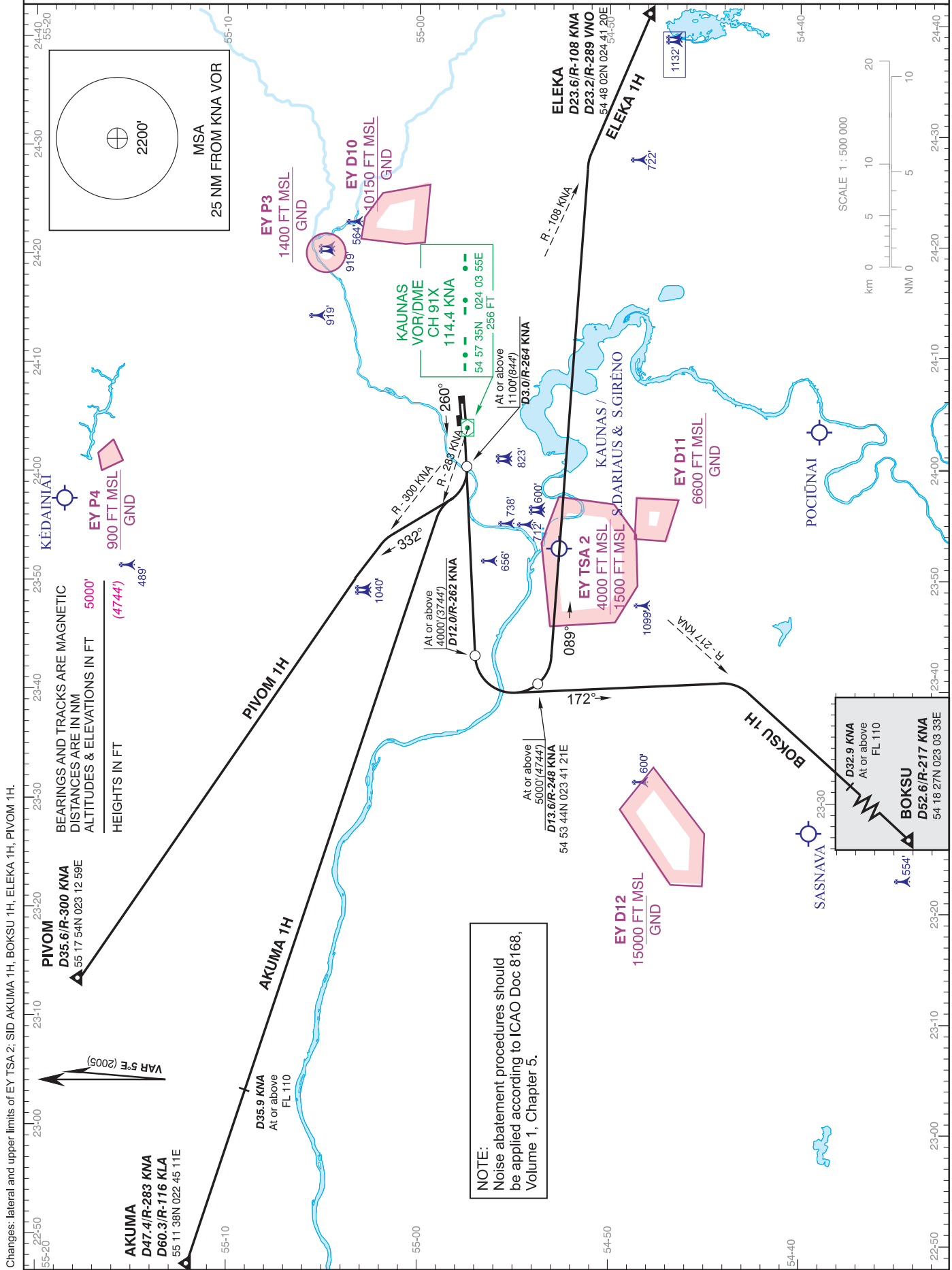


STANDARD DEPARTURE CHART -
INSTRUMENT (SID) - ICAO
TRANSITION LEVEL By ATC
TRANSITION ALTITUDE 5000' (4744')

AD ELEV 256'
HEIGHTS RELATED TO
THR RWY 26 ELEV 256'

APPROACH 124.200
TOWER 118.500

KAUNAS / International
LITHUANIA
SID RWY 26
AKUMA 1H, BOKSU 1H,
ELEKA 1H, PIVOM 1H



Changes: lateral and upper limits of EY TSA 2; SID AKUMA 1H, BOKSU 1H, ELEKA 1H, PIVOM 1H.

STANDARD DEPARTURE ROUTES - INSTRUMENT (SID) RWY 26

After take-off climb to **4000'** except when indicated by ATC otherwise

SID	ROUTING	ALTITUDE
AKUMA 1H	AKUMA ONE HOTEL Straight ahead to D 3.0/R-264 KNA, turn RIGHT to intercept R-283 KNA, proceed to AKUMA.	Cross (D3.0/R-264 KNA) at or above 1100' (844') Passing D 35,9 KNA at or above FL110.
BOKSU 1H	BOKSU ONE HOTEL Straight ahead to D 12.0/R-262 KNA, turn LEFT, 172° track, intercept R-217 KNA, proceed to BOKSU.	Cross (D12.0/R-262 KNA) at or above 4000' (3744') Passing D 32,9 KNA at or above FL110.
ELEKA 1H	ELEKA ONE HOTEL Straight ahead to D 12.0/R-262 KNA, turn LEFT, 089° track, intercept R-108 KNA (R-289 VNO), proceed to ELEKA.	Cross (D12.0/R-262 KNA) at or above 4000' (3744')
PIVOM 1H	PIVOM ONE HOTEL Straight ahead to D 3.0/R-264 KNA, turn RIGHT, 332° track, intercept R-300 KNA, proceed to PIVOM.	Cross (D3.0/R-264 KNA) at or above 1100' (844')